

NORTH GEORGIA COLLEGE



3 0642 00152 8143

CYCLOPS  
MCMXXXV



DEMCO  
NO. 849

**FOR REFERENCE**

**Do Not Take From This Room**

*Red Bull House*



982



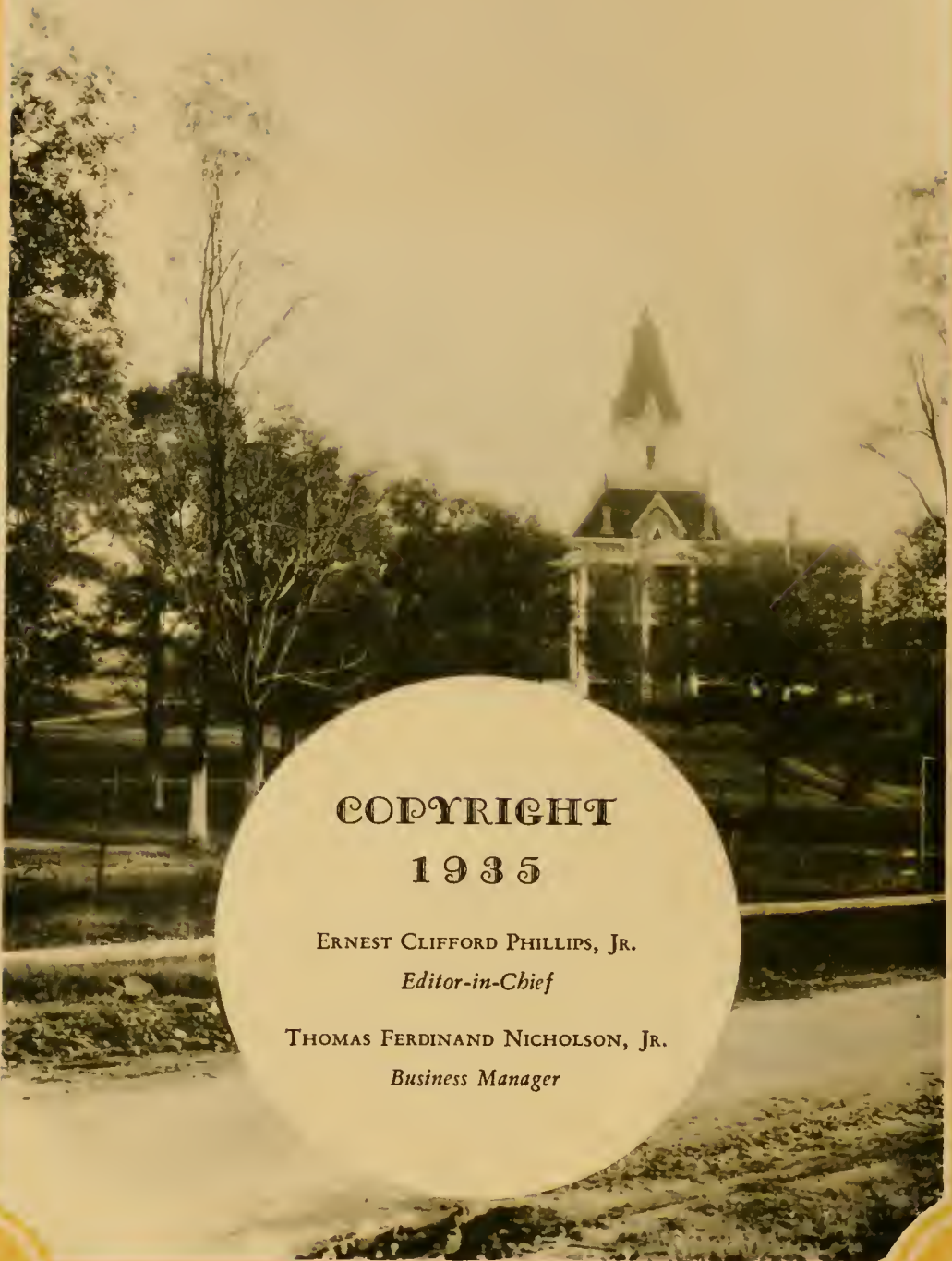
**North Georgia College Library**  
**DAHLONEGA, GA.**

1. Books may be kept two weeks and may be renewed once for the same period, except 7 day books.
2. A fine of two cents a day will be charged on each book which is not returned according to the above rule.
3. Not more than two books may be taken out by one person at the same time.
4. All injuries to books beyond reasonable wear, and all losses shall be made good to the satisfaction of the Librarian.
5. Each borrower is held responsible for books drawn on his card and for all fines accruing on the same.

THE CYCLOPS

1935





**COPYRIGHT**

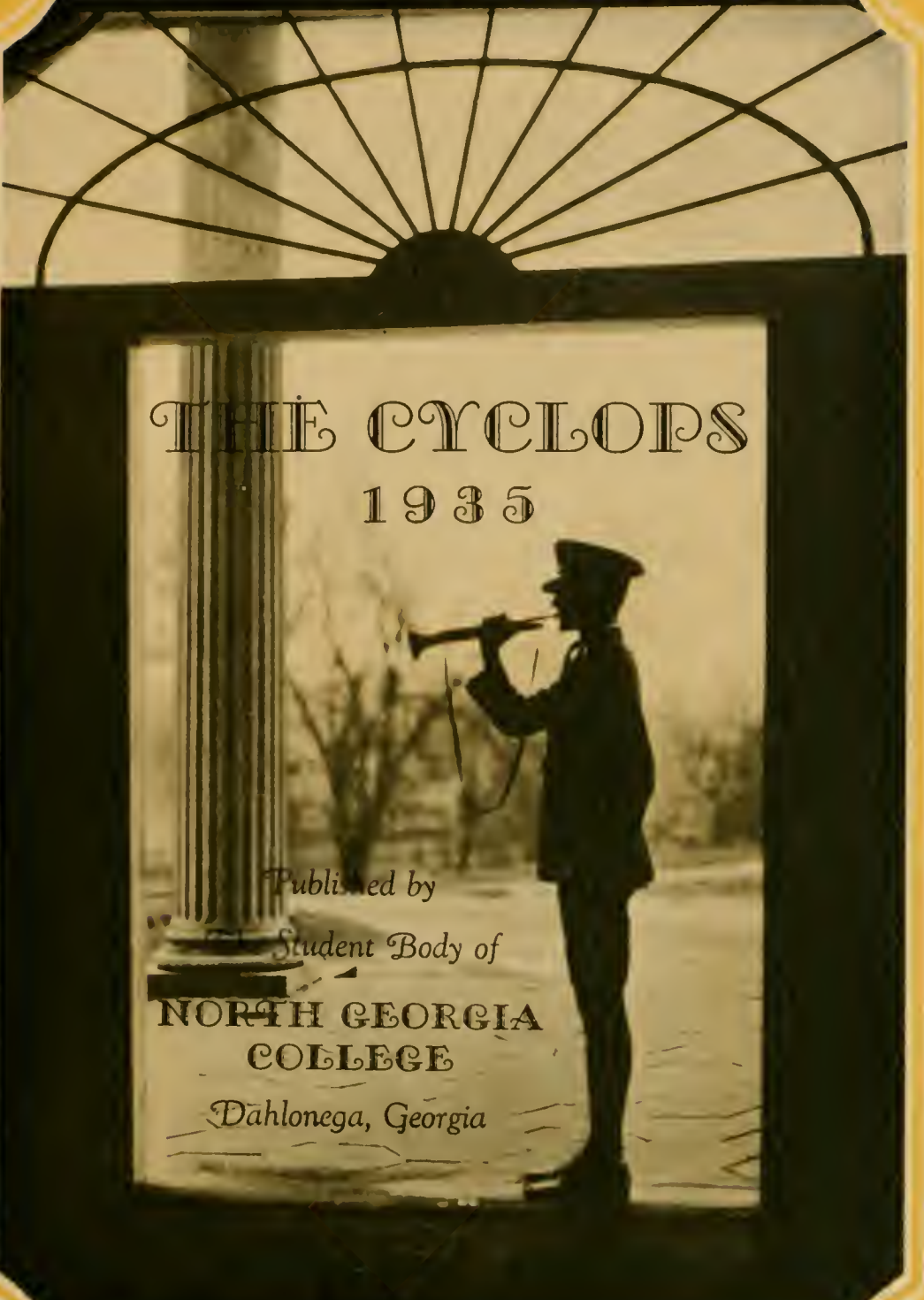
**1935**

ERNEST CLIFFORD PHILLIPS, JR.

*Editor-in-Chief*

THOMAS FERDINAND NICHOLSON, JR.

*Business Manager*



THE CYCLOPS  
1935

*Published by*  
*Student Body of*  
**NORTH GEORGIA**  
**COLLEGE**  
*Dahlonega, Georgia*

# DEDICATION

*To Captain Kirby Green, who has been an inspiration to us through our two years of college life, the class of nineteen hundred and thirty-five dedicates this, the twenty-second volume of the CYCLOPS, in token of our love for him as a man, our admiration for him as a soldier, and our devotion to him as a leader.*



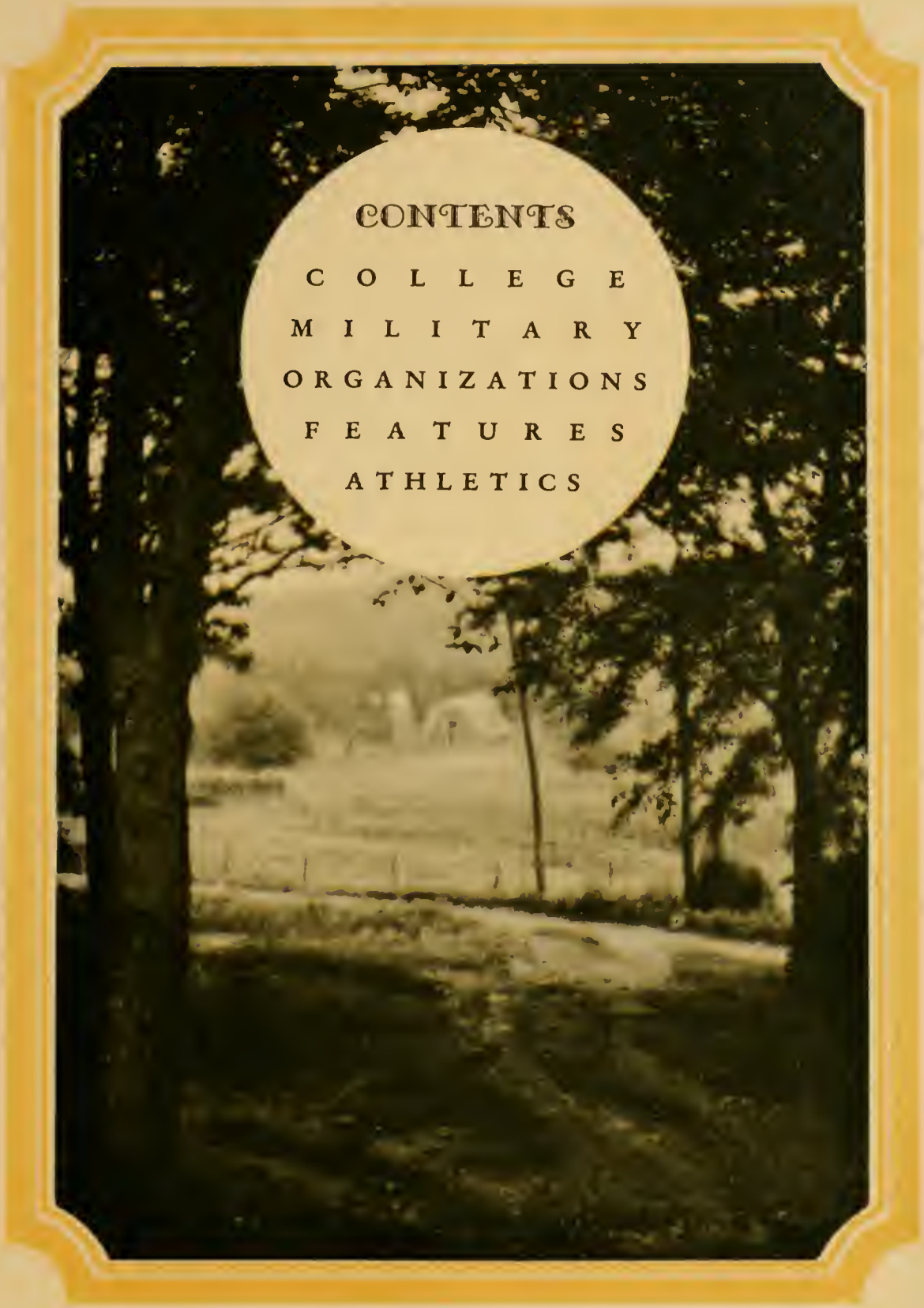






## FOREWORD

In years to come if you have grown somewhat serious with the cares and responsibilities of life, if the memory of your college days has been dulled by the swift passage of events, and in a moment of ease you should refresh the sainted memories of your college life at North Georgia, memories of hours of play, tinged with moments of work, and if you should in spirit live over again your life here, then our work will not have been in vain.



CONTENTS

C O L L E G E  
M I L I T A R Y  
O R G A N I Z A T I O N S  
F E A T U R E S  
A T H L E T I C S





C O L L E G E

## THE BOARD OF REGENTS

### UNIVERSITY SYSTEM OF GEORGIA

MARION SMITH, *Chairman*

SANDY BEAVER, *Vice-Chairman*

ANDREW JACKSON KINGERY, *Secretary and Treasurer*

---

EUGENE TALMADGE, <i>Governor of Georgia</i> . . . . .	Ex Officio
MARION SMITH, <i>Atlanta</i> . . . . .	State-at-Large
S. H. MORGAN, <i>Guyton</i> . . . . .	First Congressional District
W. J. VEREEN, <i>Moultrie</i> . . . . .	Second Congressional District
GEORGE C. WOODRUFF, <i>Columbus</i> . . . . .	Third Congressional District
CASON J. CALLAWAY, <i>LaGrange</i> . . . . .	Fourth Congressional District
CLARK HOWELL, JR., <i>Atlanta</i> . . . . .	Fifth Congressional District
W. ELLIOTT DUNWODY, JR., <i>Macon</i> . . . . .	Sixth Congressional District
E. S. AULT, <i>Cedartown</i> . . . . .	Seventh Congressional District
M. D. DICKERSON, <i>Douglas</i> . . . . .	Eighth Congressional District
SANDY BEAVER, <i>Gainesville</i> . . . . .	Ninth Congressional District
R. P. BURSON, <i>Monroe</i> . . . . .	Tenth Congressional District

---

PHILIP WELTNER, *Chancellor, University System of Georgia*



JONATHAN C. ROGERS, A.M., Ed.D.  
*President*

THERE is developing a new type of American college student. Increasingly he is interested in sports, music, drama and other recreational activities. He also manifests a different attitude toward scholarship, the library, and the laboratory. Life is viewed more seriously, yet not less joyously.

It has been gratifying, indeed, to note the growth of this spirit at North Georgia during the present year. While instructors in the academic and military departments have insisted upon their usual high standards of excellence, the Athletic Department, Band, Orchestra and Glee Club have made outstanding contributions to campus and community life. The awakening interest in public speaking and dramatics suggests a line of possible future development.

The increased attendance of co-eds has resulted in a more normal social life, and the appearance of the Y. W. C. A. is most encouraging. The work and influence of the Y. M. and Y. W. should be extended, and it is hoped that adequate student leadership will another year come forward.

Through the co-operation and fine spirit of students and faculty alike 1935 has been an excellent year; the place of North Georgia in the University System has undoubtedly been strengthened. Its appeal is distinctly unique and state-wide. As we look toward next year, may not alumni, students, faculty and friends build a yet stronger college and a more effective spirit and loyalty.

J. C. ROGERS, *President,*  
*North Georgia College*

## FACULTY

JOHN DURHAM ANTHONY, B.S., M.A.  
*Professor of Biology*  
 B.S., Transylvania; M.A., Emory University

F. ANGELBERG  
*Director of the Band*  
 Retired United States Army Band  
 Director

NINA AULIMAN, A.B.  
*Secretary*  
 A.B., Georgia State College for Men

J. C. BARNIS, B.S.  
*Professor of Mathematics*  
 B.S., North Georgia College; Graduate  
 Student, Harvard University

W. D. BOOTH, B.S., M.A.  
*Assistant Professor of English*  
 B.S., Georgia State College for Men;  
 M.A., Emory University

F. D. BUSH, B.S., A.M.  
*Professor of English*  
 B.S. and A.M., University of Georgia

ANDREW W. CAIN, A.B., A.M.  
*Professor of Social Science*  
 A.B., North Georgia College; M.A., University of the Philippines; Graduate Student, University of Georgia, University of Texas, University of the Philippines, University of California, Columbia University, University of North Carolina, and University of Virginia

CAPT. CHARLES CARLTON, D.O.I.  
*Assistant Professor of Military Science  
 and Tactics*

CAMILIUS J. DISMUKIS, A.B., M. A.  
*Professor of French*  
 A.B., Birmingham - Southern College;  
 M.A., University of North Carolina







FACULTY

LORIMER B. FREEMAN, B.S.C., M.S.C.  
*Assistant Professor of Social Science*  
 B.S.C. and M.S.C., University of Georgia; Graduate Student, Northwestern University

BENJAMIN P. GAHLFARD, A.M., Ph.D.  
*Professor Emeritus of Geology*  
 A.B., Oglethorpe University; A.M., University of Georgia; Ph.D., Oglethorpe University; Graduate Student at University of Georgia and University of Chicago

MRS. FANNIE GREEN\*  
*Dietitian*

CAPT. KIRBY GREEN, INF. (D.O.L.)  
*Professor of Military Science and Tactics*

P. M. HUTCHERSON, B.S.C.,  
 CAPT. O.R.C.  
*Commandant*

B.S.C., North Georgia College

THOMAS S. LOGAN, B.S., M.S., Ph.D.  
*Professor of Physical Science and Chemistry*

B.S. and M.S., Emory University; Ph.D., Johns Hopkins University

SERGE. RICHARD McCONNELL,  
 INF. (D.E.M.L.)  
*Assistant Professor of Military Science and Tactics*

LUCY MONDAY  
*Dean of Women*

MRS. MARGARET RELVES\*  
*Instructor in Home Economics*

JOHN C. SIMMONS, Ph.B., M.A.  
*Professor of Education*  
 Ph.B. and M.A., Emory University; Graduate Student, Duke University

JOSEPHINE VERNER STROTHER, A.B.  
*Librarian*  
 A.B., Shorter College; A.B. in Library Science, Emory University

R. W. STEPHENS, A.B.  
*Coach of Athletics*  
 A.B., Oglethorpe University

\*No Picture



### CAPTAIN CHARLES CARLTON

THIS page is most respectfully dedicated to Captain Charles Carlton, who for six years has watched and guided the footsteps of many cadets at North Georgia College.

Captain Carlton has served in the capacity of Assistant Professor of Military Science and Tactics since 1929. He has been most efficient. Since his arrival at North Georgia the military rating of the school has steadily increased. A good deal of the credit for this achievement is given him.

Captain Carlton furnishes to every student who comes within the portals of this institution an inspiration that cannot be found in books.

North Georgia will miss you; future cadets will miss the opportunity of your association, but success will be your portion wherever you may be, and the love and admiration of the cadets will be with you.



SOPHOMORES

CLASS OFFICERS

W. HARRY TANNER . . . . . *President*

MOODY H. MURKLY . . . . . *Vice-President*

ERNEST C. PHILLIPS, JR. . . . . *Secretary*

WADE H. WILLIAMSON, JR. . . . . *Treasurer*



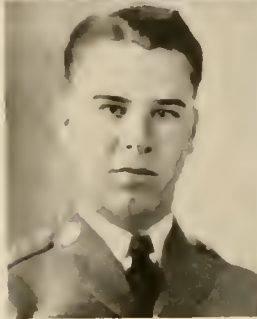
## SOPHOMORES

*First row: B. ALLEN, E. ALLEN. Second row: BABB, G. BATIMAN. Third row: W. BATIMAN, BLALOCK.*



GEORGE BABB  
LOVILJOY, GA.

*"What sweet delight a quiet life affords."*  
Decora 1, 2; Sergeant Band 2.



GREGORY BATIMAN  
DEEPSTEP, GA.

*"An affable and courteous gentleman,  
What more could mortal wish?"*  
Phi Mu 1; Y. M. C. A. 1.

BLANCHIE ALLEN  
ELLIJAY, GA.

*"She was ever fair and never proud  
Had tongue at will, and yet it was never  
loud."*

Corona 1.

WILLIAM BATIMAN  
DEEPSTEP, GA.

*"A gentleman makes no noise."*  
Corporal "B" Company 2.

EDITH ALLEN  
ELLIJAY, GA.

*"The hand that bath made you fair bath  
made you good."*

Corona 1.

C. LANIER BLALOCK  
NICHOLS, GA.

*"A rare bird on earth."*  
Rex 1, 2; Decora 1, 2; Y. M. C. A. 1,  
2; CYCLOPS Staff 2; Rifle Team 2; Ser-  
geant "B" Company 2.

# THE TOWN PATRIOTS

JOSEPH S. BROWN  
BAXLEY, GA.

*"He shows occasionally surface indications of intellect."*  
Glee Club 1, 2; Quartet 1, 2; Decora 1, 2.

JOHN ROBERT COOK  
SINOLA, GA.

*"Nature after making him, broke the mould."*  
Rex 1, 2; Glee Club 1, 2; Quartet 1; Officers' Club 2; First Lieutenant "A" Company; Decora 1, 2, Secretary-Treasurer 2.

HUGH CARNY  
BALL GROUND, GA.

*"Anything for a quiet life."*  
Tennessee Wesleyan 1.

JAMES CORLEY  
ZIBULON, GA.

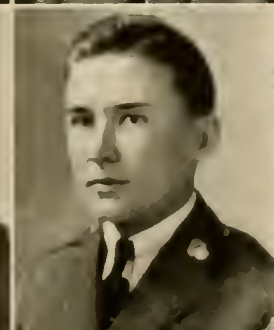
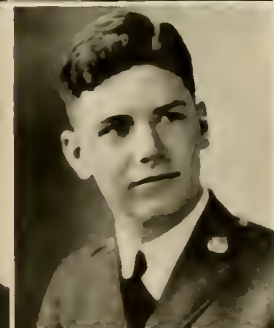
*"A workman that needeth not to be ashamed."*  
Phi Mu 1.

REID CHILDERS  
GRIFFIN, GA.

*"From the crown of his head to the sole of his foot he is all mirth."*  
University of Georgia 1; Sigma Theta 2.

FRED COLLINS  
BAXLEY, GA.

*"Health and cheerfulness mutually beget each other."*  
Decora 1, 2; Corporal Band 2.

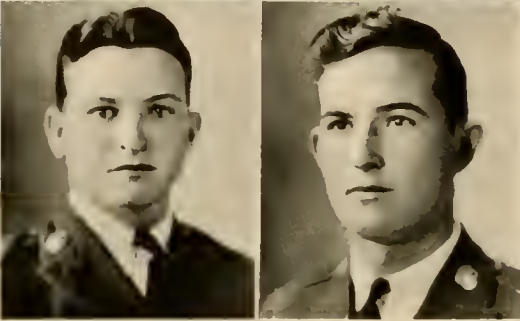
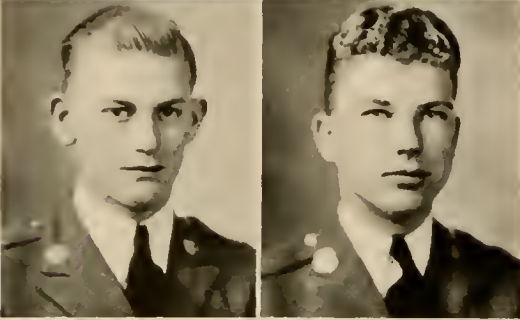
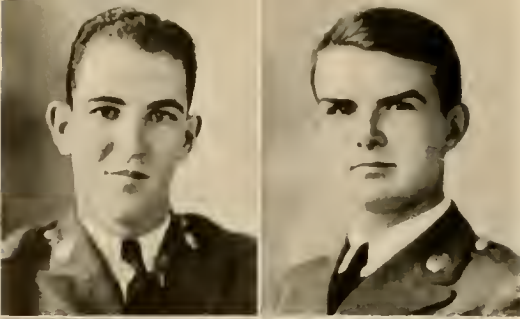


First row: BROWN, CARNY. Second row: CHILDERS, COLLINS. Third row: COOK, CORLEY.

## SOPHOMORES

## SOPHOMORES

First row: DAVIS, DAVIS. Second row: DAVIS,  
DYER. Third row: FIELD, FLOYD.



RICHARD DAVIS  
TAYLORSVILLE, GA.

*"That load becomes light which is  
cheerfully borne."*

Rex 1, 2; Decora 1, 2; Sergeant "A"  
Company.

BURG DYER  
DAILONGA, GA.

*"No man is happy who does not think  
himself so."*

Sigma Theta 2; Rifle Team 2; Decora  
1, 2.

STANLEY DAVIS  
HURSI, GA.

*"Not one word spoke be more than was  
need."*

Corporal "B" Company.

CHARLES FIELD  
ROCKY FACE, GA.

*"For he's a jolly, good fellow which no  
one can deny."*

Rex 1, 2; Rifle Team 2; Glee Club 1, 2;  
"D" Club 1, 2; Football 1; Manager  
Baseball, Basket-ball; Color-Sergeant 2.

DAVID DAVIS  
WINDBER, PA.

*"Friendly, generous, good natured."*

Sigma Theta 1, 2; "D" Club 1, 2; Foot-  
ball 1; First Sergeant "B" Company.

LESTER FLOYD  
CHIPLIY, GA.

*"He was ever precise in promise-keeping."*

First Sergeant Band 2.

JOSEPH FOSTER  
ROSWELL, GA.

*"A mighty spirit fills that little form."*  
Sigma Theta 2; Decora 1, 2; Corporal  
"B" Company 2.

EUGENE GRUBBS  
CORDELL, GA.

*"Given to hospitality."*  
Sigma Theta 1, 2, President 2; Y. M. C.  
A. 1; Sergeant "A" Company 2.

MARY WILL FOWLER  
DURAND, GA.

*"Multum in parvo."*  
Georgia Industrial College 1; Corona 2;  
Y. W. C. A. Cabinet 2.

HAROLD HARDY  
JEFFERSON, GA.

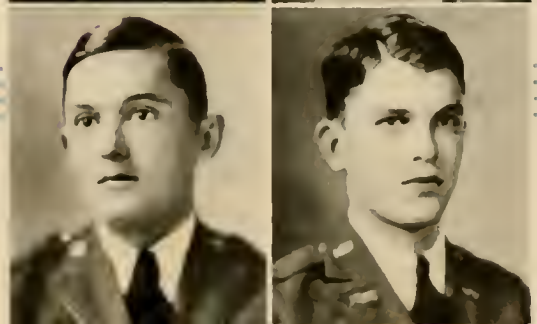
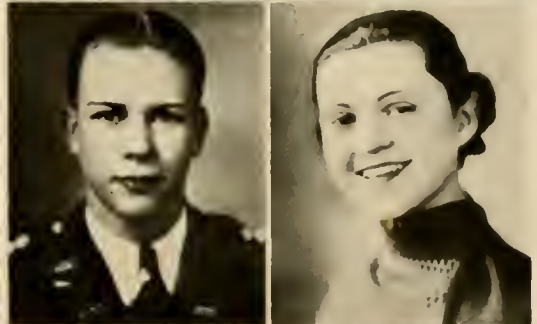
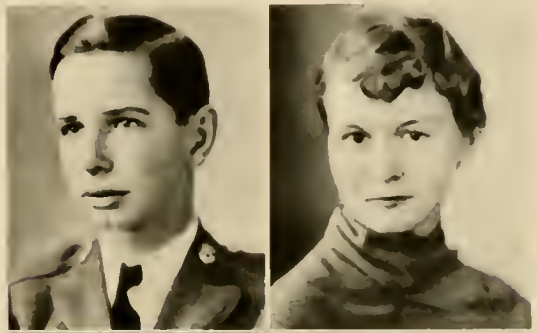
*"Not too serious, not too gay,  
But a rare, good fellow when it comes  
to play."*  
Officers' Club 2; "D" Club 1, 2; Phi Mu  
1; Basket-ball 1, 2; Lieutenant Band 2.

GEORGE GALLOWAY  
BARNESVILLE, GA.

*"Go bravely, go serenely, go angustly—  
who can withstand thee then?"*  
Officers' Club 2; "D" Club 1, 2; Cy-  
clops Staff 2; Manager Baseball and Bas-  
ket-ball; Football 1; Captain Staff 2.

AMANDA GARNER  
HILBURN, GA.

*"Her voice was ever soft,  
Gentle and low—an excellent thing in  
a woman."*  
Cox 1; Corona 2; Y. W. C. A. Cabinet 2.

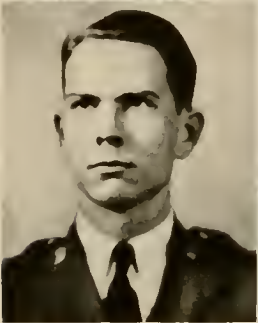
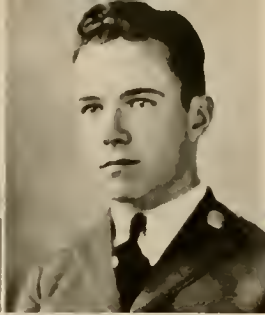
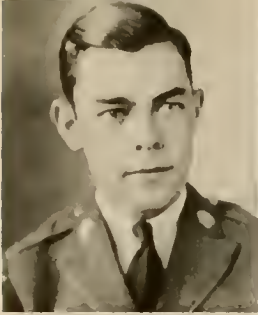


First row: FOSTER, FOWLER. Second row: GALLO-  
WAY, GARNER. Third row: GRUBBS, H. HARDY.

SOPHOMORES

## SOPHOMORES

*First row: J. HARDY, HOBSON. Second row: HOLCOMBE, HULL. Third row: JACKSON, JOHNSON.*



EMMA GRACIE HOLCOMBE  
TALF, GA.

*"A merry student, never sad,  
Her smile makes all glad."*

University of Georgia 1; Corona 2; Y.  
W. C. A. Vice-President 2.



FRED HULL  
ACWORTH, GA.

*"Born for success he seems."*

Presbyterian College 1; Sigma Theta 2;  
"D" Club 2; Cheer Leader 2; Corporal  
"B" Company 2.



JACK HARDY  
JEFFERSON, GA.

*"Be merry; and employ your chiefest  
thoughts to courtship."*

Sigma Theta 1, 2; Decora 1; Orchestra  
1, 2; Corporal Band 2.



CONTIN HOBSON  
TALKING ROCK, GA.

*"A modest, unassuming, harmless,  
youth."*

Baseball 1; Decora 1, 2; "D" Club 1, 2;  
Rifle Team 2.



EISIE JOHNSON  
GAINESVILLE, GA.

*"Wherefore should I care?"*

Corona 1.



HOUSTON KEMPER  
JONSBORO, GA.

*"Firm in mind and massive of heart,  
He has always acted well his part."*

Rex 1, 2; "Bugler" Staff 2; First Sergeant "A" Company 2.

JOHN LANGDALE  
VALDOSIA, GA.

*"A prompt, decisive man."*

Decora 1; Band 1, 2.

WILLIAM ELIS KENNEDY  
HUTTON, GA.

*"A little nonsense, now and then  
Is relished by the best of men."*

Sigma Theta 1, 2, Treasurer 2; Y. M. C. A. 1, 2, Vice-President 2; Glee Club 1, 2; Dramatic Club 2; Sergeant "A" Company 2.

MARY MCKEE  
DAWSONVILLE, GA.

*"Full of pep and life and fun,  
In role of talker she forces foes to run."*

FANNIE LEE KENIMER  
CLERMONT, GA.

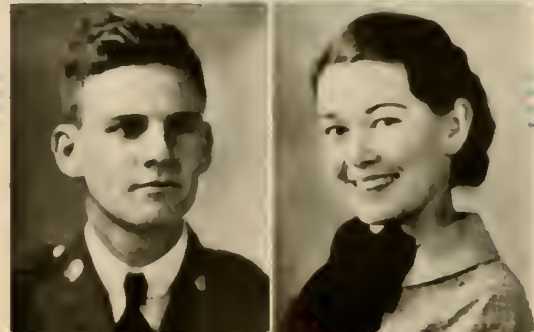
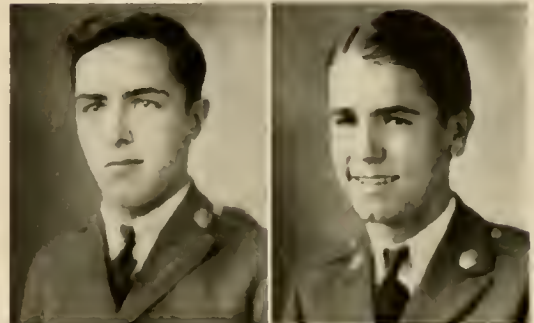
*"To play the game for all there's in it,  
To play the game and play to win it."*

Corona 2, Treasurer 2; Y. W. C. A. Cabinet 2.

W. HAMILTON KIMZEY, JR.  
CORNELIA, GA.

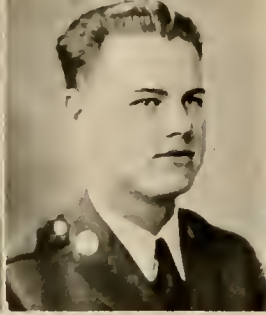
*"Far different be from the dull, plodding  
tribe."*

Rex 1, 2; Treasurer Freshman Class; Phi Mu 1; Corporal "B" Company 2.



First row: KEMPER, KENNEDY. Second row: KENIMER, KIMZEY. Third row: LANGDALE, MCKEE.

SOPHOMORES



## SOPHOMORES

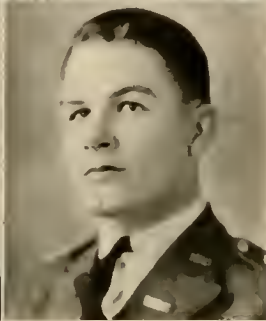
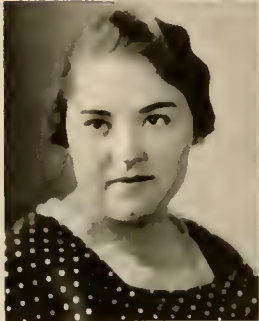
First row: McKINNON, MANN. Second row:  
H. MARTIN, I. MARTIN. Third row: MEADERS,  
MEERS.



HAZEL MARTIN  
LYRLY, GA.

*"It is the mind that makes the body  
rich."*

Corona 1, 2; Chaplain 2.



INEZ MARTIN  
MURRAYVILLE, GA.

*"She never found fault with you, never  
implied your wrong by her right."*

Corona 1, 2.



IDA NELI MCKINNON  
TALLADEGA SPRINGS, ALA.

*"A little rule, a little sway,  
A sunbeam in a winter's day."*

Corona 1, 2, President 2; Y. W. C. A.  
2, President 2; Dramatic Club 2; Cy-  
clops Staff 2.



OLIN MANN  
CANTON, GA.

*"The mildest manners and the gentlest  
heart."*

Basket-ball 1, 2; Corporal "A" Company  
2.

FLORENCE MEADERS  
CLEVELAND, GA.

*"The blessings of her quiet life  
Fell on us like the dew."*

Corona 2.



WILBERT MEERS  
NICHOLS, GA.

*"Health and cheerfulness mutually beget  
each other."*

Rifle Team 1, 2; Officers' Club 2; "D"  
Club 1, 2; Baseball 1, 2; Basket-ball 2;  
Captain Band 2.

H. C. MITCHAM  
DURAND, GA.

*"As full of spirit as the month of May  
And gorgeous as the sun in midsum-  
mer."*

Sigma Nu; Sigma Theta 2; Officers' Club  
2; "D" Club 1, 2; Manager Baseball and  
Basket-ball 1; Decora 1; Lieutenant Staff  
2.

FRED MOSS  
TATE, GA.

*"I'll make me glorious by my pen,  
And famous by my sword."*

Rex 1, 2, Vice-President 2; Officers' Club  
2, Secretary and Treasurer 2; Cyclops  
Staff 2; Rifle Team 1, 2; Glee Club 1, 2;  
Decora 1, 2, Vice-President 2; "Bugler"  
Staff; Captain "A" Company 2.

IDA GRACE MITCHELL  
COPPERHILL, TENN.

*"The way to have friends is to be one."*  
Corona 2.

MOODY MULKEY  
CORDLE, GA.

*"In the spring a young man's fancy  
Lightly turns to thoughts of love."*

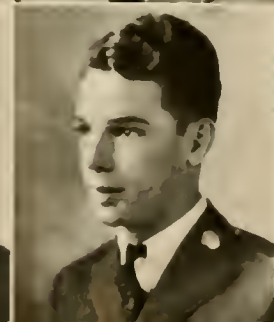
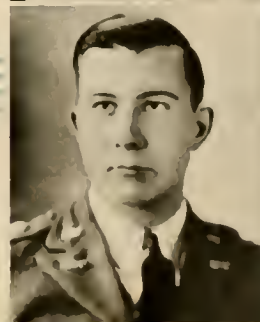
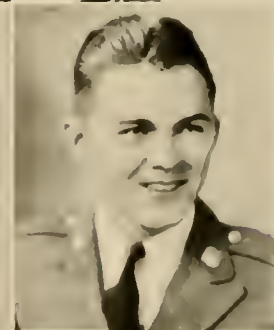
Sigma Theta 1, 2; "D" Club 1, 2; Vice-  
President Sophomore Class; Y. M. C. A.  
1; Football 1; Cheer Leader 2; Sergeant  
Band 2; Drum Major 2.

MARY MOORE  
DAHLONIGA, GA.

*"The sweetest thing that ever grew  
Beside a human door."*  
Corona 1, 2.

WAYNE MORGAN  
SYCAMORE, GA.

*"He was the mildest-manner'd man."*  
Sigma Theta 1, 2, Vice-President 2; De-  
cora 1, 2; Y. M. C. A. 1, 2, Cabinet 2;  
Cyclops Staff 2; Rifle Team 2; Glee  
Club 1, 2; Quartet 2; Sergeant "A"  
Company 2.

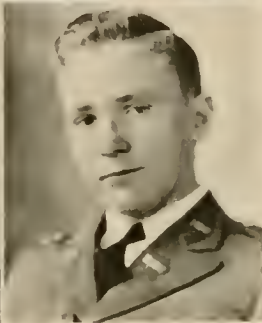
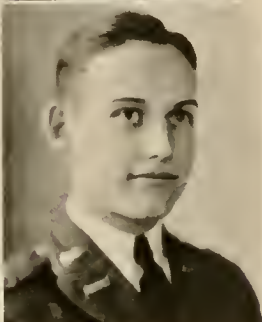


First row: MITCHAM, MITCHELL. Second row:  
MOORE, MORGAN. Third row: MOSS, MULKEY.

SOPHOMORES

## SOPHOMORES

*First row: MUNDY, NILL. Second row: NICHOLSON, PHILLIPS. Third row: PURCELL, RAGSDALE.*



REUBEN MUNDY  
JONSBORO, GA.

*"We shall not see his like again."*  
Rex 1, 2; Y. M. C. A. 1, 2, Cabinet 2;  
Decora 1, 2.

MONROI NILL  
CARTERSVILLE, GA.

*"Thy modesty is a candle to thy merit."*  
Decora 1, 2; Glee Club 1, 2; Corporal  
Band 2.

THOMAS F. NICHOLSON  
VALDOSTA, GA.

*"He bath a head to contrive, a tongue to persuade, and a hand to execute."*

Rex 1, 2, President 2; Rifle Team 1, 2;  
CYCLOPS Staff 1, Business Manager 2;  
Officers' Club 2; Orchestra 2; President  
Freshman Class; President Student Body  
2; Captain "B" Company 2.

ERNEST C. PHILLIPS, JR.  
CUTHBERT, GA.

*"Behold him, single in the field."*

Rex 1, 2, Secretary 2; CYCLOPS Staff 1,  
Editor-in-Chief 2; Officers' Club 2; Glee  
Club 1, 2; Phi Mu 1; Y. M. C. A. 1, 2,  
Cabinet 2; "Bugler" Staff 2; Secretary  
Sophomore Class; Lieutenant Staff 2.

ROY PURCELL  
BALL GROUND, GA.

*"Consistency is a jewel."*  
Y. M. C. A. 1, 2; Basket-ball 1, 2.

FRED RAGSDALE  
DALLAS, GA.

*"On with the dance; let joy be uncon-  
fined."*

CYCLOPS Staff 2; Officers' Club 2, Vice-  
President 2; Baseball 1, 2; Basket-ball 1,  
2; "D" Club 1, 2; Phi Mu 1; Lieutenant  
"B" Company 2.

HERBERT ROBINSON  
DAWSONVILLE, GA.

*"Good and handsome enough."*  
Corporal "B" Company 2.

BERNICE SIMMONS  
DAHLONEGA, GA.

*"A ready smile lifts a world of sorrow."*  
Corona 1, 2.

DONALD ROGERS  
SANDERSVILLE, GA.

*"Let the bass of Heaven's deep organ  
blow."*  
Rifle Team 1, 2; Winner Medal for Best  
Rifle Shot; Glee Club 1, 2; Corporal "B"  
Company 2.

A. J. SMITH  
CORDELE, GA.

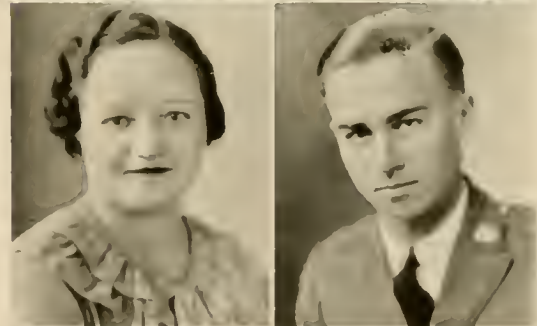
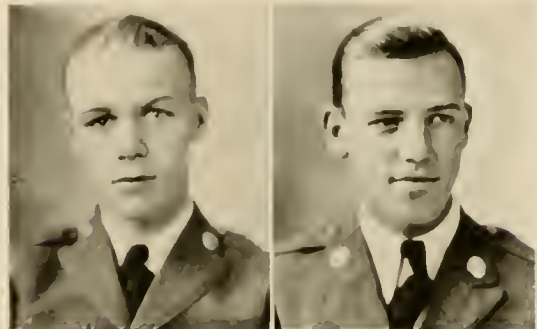
*"His cheerful temperament cheers our  
gloomy days."*  
Sigma Theta 1, 2, Secretary 2; Decora 1,  
2, President 2; Y. M. C. A. 1, 2, Sec-  
retary and Treasurer 2; Dramatic Club  
2; Corporal "A" Company 2.

INIZ ROWLAND  
WRIGHTSVILLE, GA.

*"Ornament of meek and quiet spirit."*  
Corona 1, 2.

HENRY SEWELL  
LAVONIA, GA.

*"It is a point of wisdom to be silent  
when occasion demands."*  
Rev 1, 2; Y. M. C. A. 1, 2; Decora 1, 2;  
Corporal "A" Company 2.

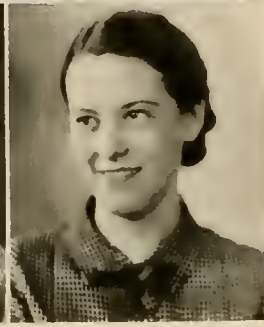
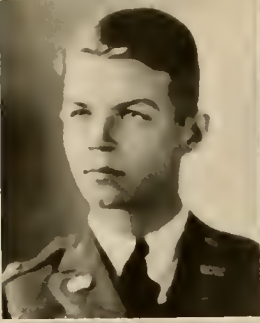


First row: ROBINSON, ROGERS. Second row:  
ROWLAND, SEWELL. Third row: SIMMONS, SMITH.

## SOPHOMORES

## SOPHOMORES

First row: STUART, TANNER. Second row:  
WADE, WALL. Third row: WEST, WILHITI.



NEIL STUART  
WOODBINE, GA.

*"Rich in good words."*

Rex 2; Officers' Club 2; Cyclops Staff  
2; "Bugler" Staff 2; Phi Mu 1; Lieuten-  
ant "B" Company 2.

HARRY TANNER  
JONSBORO, GA.

*"One who never turned his back,  
marched breast forward."*

Rex 1, 2, Treasurer 2; Officers' Club 2;  
"D" Club 1, 2; Basket-ball 1, 2; Base-  
ball 1, 2; President Sophomore Class;  
Rifle Team 2; Y. M. C. A. 1; Lieutenant  
"A" Company 2.

PAUL WADE  
LITHONIA, GA.

*"True as the needle to the pole  
Or as the dial to the sun."*

Decora 1, 2; Corporal "A" Company 2.

ZEKE WALL  
DAWSON, GA.

*"Come hither from the furrow, and be  
merry."*

Sigma Theta 1, 2; Phi Mu 1.

SYBIL WEST  
DAHLONEGA, GA.

*"In all things, simple, modest, sweet."*

Corona 1, 2.

MILDRED WILHITI  
JEFFERSON, GA.

*"Shone a light in her deep, dark eye  
Pure as a star."*

Piedmont 1; Corona 2.

WADE WILLIAMSON  
JEFFERSON, GA.

*"None knew thee but to praise thee."*  
Rex 1, 2; Treasurer Sophomore Class;  
Officers' Club 2, President 2; Rifle Team  
2; Glee Club 1, 2; Quartet 1, 2; Phi Mu  
1; Orchestra 2; Lieutenant Band 2.

JOE WODDAH  
LUMPKIN, GA.

*"Mirth, with thee I mean to live."*  
Sigma Theta 1, 2; Decora 1, 2.

LUCIUS WOODS  
DAWSON, GA.

*"Plain, without pomp, and rich without  
show."*  
Southwest Georgia 1.

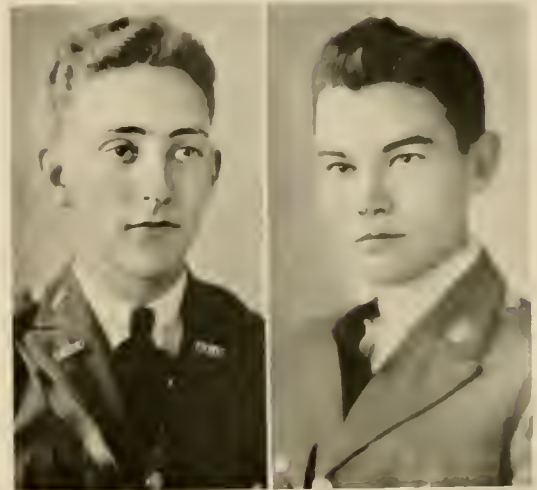
SARA YOUNG  
MACON, GA.

*"A smile is worth a thousand sighs in  
any market."*  
Corona 1, 2; Y. W. C. A. Cabinet 2;  
Cyclops Staff 2.

PICTURE NOT SHOWN

- NATHANIEL BACON . . . Irwinton, Ga.  
DEAN BARRETT . . . Cumming, Ga.  
ISOBEL BARRITT . . . Dablonaga, Ga.  
WILLIAM BARTEE . . . Woodbury, Ga.  
JACK BOATWRIGHT . . . Cornelia, Ga.  
ROY BOTTOMS . . . Cumming, Ga.

- FRED BRINSON . . . Miami, Fla.  
JESSIE BURGESS . . . Dablonaga, Ga.  
JOHN CALLAWAY . . . Greensboro, Ga.  
BARNY CLAYTON . . . Rossville, Ga.  
LLOYD CONNELL . . . Cairo, Ga.  
ETTA CRAVEN . . . Cleveland, Ga.  
RAYMON J. CUTCHEN . . . Climax, Ga.  
MAURICE DIFOOR . . . Toccoa, Ga.  
MARSHALL DIFOOR . . . Toccoa, Ga.  
WALTER FAUST . . . Lexington, Ga.  
MONICA GARRETT . . . Sarah, Ga.



First row: WILLIAMSON, WODDAH. Second row:  
WOODS, YOUNG.

SOPHOMORES

PICTURE NOT SHOWN

HENRY GIBSON . . . . <i>Folkston, Ga.</i>	CHARLIE MARTIN . . . . <i>Kingston, Ga.</i>
FREDERICK GOWDER . . <i>Gainesville, Ga.</i>	WILLIAM MAXWELL . . <i>Lexington, Ga.</i>
OTIS GOWDER . . . . <i>Gainesville, Ga.</i>	JACK MEADERS . . . . <i>Dablonaga, Ga.</i>
DAVIDSON HILL . . . . <i>Sasser, Ga.</i>	RANDOLPH PASLEY . . . <i>Crest, Ga.</i>
HUGH HILL . . . . <i>Alamo, Ga.</i>	CRAWFORD PAULK . . <i>Thomaston, Ga.</i>
ROBERT HOLBROOK . . <i>Carnesville, Ga.</i>	HARRY PHILIPS . . . . <i>Cuthbert, Ga.</i>
PAUL HOLCOMB . . . <i>Clarksville, Ga.</i>	JEFF STEWART . . . . <i>Dablonaga, Ga.</i>
CHARLES HUDSON . . . <i>Raleigh, Ga.</i>	PAUL VAUGHIN . . . <i>Williamson, Ga.</i>
ZONA JARRARD . . . <i>Dablonaga, Ga.</i>	S. B. VAUGHTERS . . <i>Dawsonville, Ga.</i>
LEAMON MCKEE . . . <i>Dawsonville, Ga.</i>	WARREN WILLIS . . . <i>Tifton, Ga.</i>
FRED MARCHMAN . . . <i>Raleigh, Ga.</i>	COBB YARBOROUGH . <i>Williamson, Ga.</i>

SPECIAL

WILMA GARRETT . . . <i>Ellijay, Ga.</i>	DORA RITCHIE . . . . <i>Cad, Ga.</i>
EUNICE JARRARD . . . <i>Dablonaga, Ga.</i>	DIRREL C. SIRMONS . <i>Dablonaga, Ga.</i>
BESSIE JORDAN . . . <i>Atlanta, Ga.</i>	WYNELLE WALLACE . <i>Canton, Ga.</i>





FRESHMEN

CLASS OFFICERS

JOHN MANLY . . . . . *President*

WILLIAM HARRIS . . . . . *Vice-President*

WILLIAM BOWERS . . . . . *Secretary*

JACK ADAMS . . . . . *Treasurer*

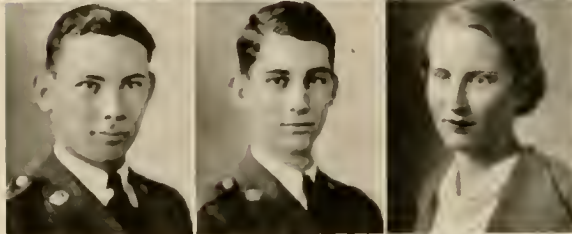


## FRESHMEN

*First row: ADAMS, ASH, BANNISTER. Second row: BEALL, BOGGS, BOLDING. Third row: BOOTH, BOWERS, BRADY. Fourth row: BRAY, BRYAN, BURCH.*

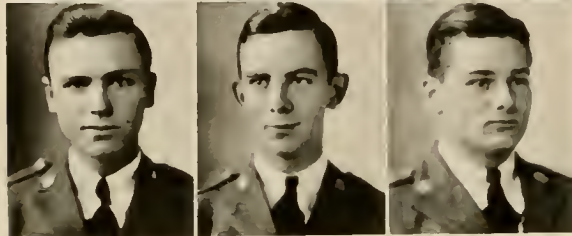


TOM BOGGS  
*Danielville, Ga.*



FRED BOLDING  
*Calhoun, Ga.*

MILL BOOTH  
*Adel, Ga.*



WILLIAM BOWERS  
*Toccoa, Ga.*

VIOLA BRADY  
*Cleveland, Ga.*

JACK ADAMS  
*Boston, Ga.*

MARY LOUISE ASH  
*Dahlonega, Ga.*

ROY BRAY  
*Crawford, Ga.*

GRADY BANNISTER  
*Cumming, Ga.*

CLYDE BRYAN  
*Tifton, Ga.*

CHARLES NORMAN BEALL  
*Moultrie, Ga.*

GLENN GRAY BURCH  
*Fayetteville, Ga.*

# THE FRESHMEN

NORA BURKE  
*Helen, Ga.*

LEONARD CLARKE  
*Hartwell, Ga.*

KRESS BURRILL  
*Marble Hill, Ga.*

RUTH CRUMLEY  
*Cornelia, Ga.*

WILLIAM BURT  
*Camilla, Ga.*

HONORE DALTON  
*Adel, Ga.*

CARL BUTLER  
*Acworth, Ga.*

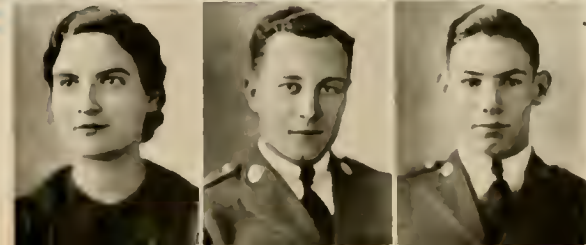
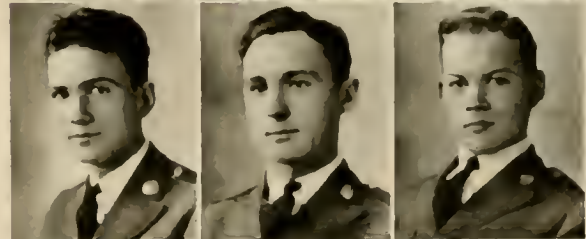
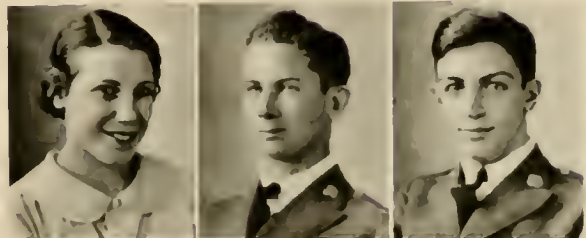
SAMUEL DANCE  
*Eatonton, Ga.*

JAMES BYRD  
*Commerce, Ga.*

LORINZA CARLTON  
*Union Point, Ga.*

GEORGE CHAMBERS  
*Ranger, Ga.*

CHARLES HOWELL CHAMPION  
*Tate, Ga.*



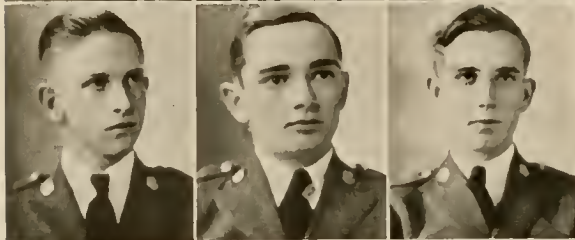
*First row* BURKE, BURRILL, BURT *Second row* BUTLER, BYRD, CARLTON *Third row* CHAMBERS, CHAMPION, CLARKE *Fourth row* CRUMLEY, DALTON, DANCE

## FRESHMEN



## FRESHMEN

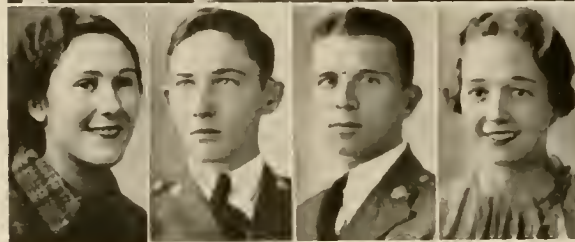
*First row: C. C. DAVIS, C. DAVIS, DRISKELL.  
 Second row: EVANS, FOWLER, FUNDERBURK. Third  
 row: GARRETT, GENTRY, GILMORE. Fourth row  
 GLASS, GUTHRIE, HARDMAN, HARRIS.*



LOUIS FOWLER  
*Stone Mountain, Ga.*



HORACE FUNDERBURK  
*Bainbridge, Ga.*



HATTIE GRACE GARRETT  
*Gainesville, Ga.*

SAM TURNER GENTRY  
*White Plains, Ga.*

JEANETTE GILMORE  
*Gillsville, Ga.*

CHARLES CLINTON DAVIS  
*Marietta, Ga.*

JOHNNY RUTH GLASS  
*Compton, Ga.*

CLARKE DAVIS  
*Griffin, Ga.*

TROY GUTHRIE  
*Morganton, Ga.*

GRACE DRISKELL  
*Gainesville, Ga.*

HENRY HARDMAN  
*Mansfield, Ga.*

WILLIAM SAMUEL EVANS  
*Bartow, Ga.*

ELEANOR HARRIS  
*Dublin, Ga.*

# THE FRESHMEN

WILLIAM HARRIS  
*Dublin, Ga.*

CHARLES HOLTZCLAW  
*Perry, Ga.*

FRANCIS HAWKINS  
*Blue Ridge, Ga.*

MRS. GUS HOUSLEY  
*Cumming, Ga.*

JOE HAYNES  
*Clermont, Ga.*

ELEANOR HOWARD  
*Dawsonville, Ga.*

BILLY HEBBARD  
*Madison, Ga.*

WOODFIN HULME  
*Devey Rose, Ga.*

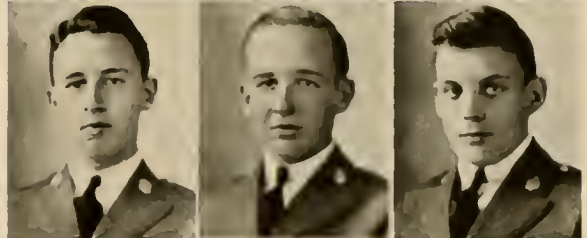
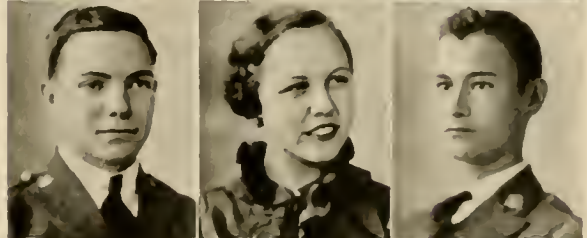
VIRGINIA HEMPHILL  
*Carnesville, Ga.*

LOUIS HENDERSON  
*Adairsville, Ga.*

ROY HENDON  
*Acworth, Ga.*

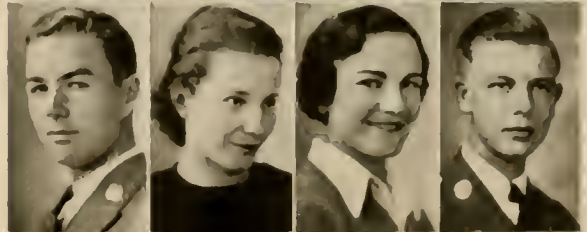
JOHN HOLDEN  
*White Plains, Ga.*

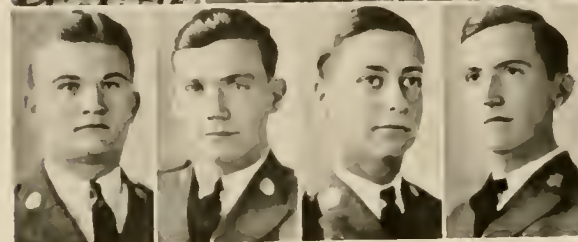
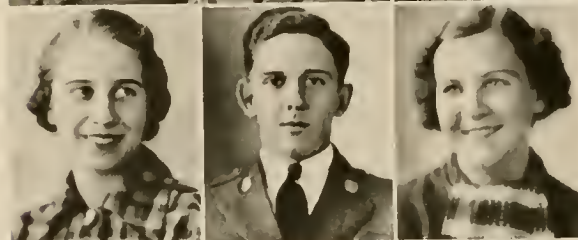
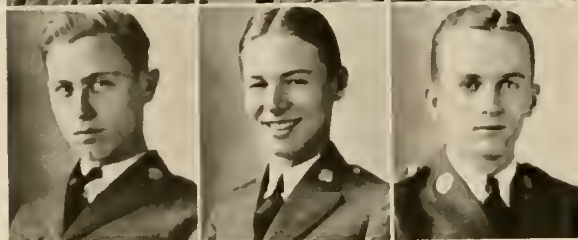
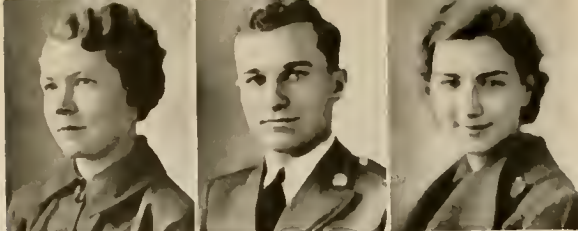
ERNST HOLDT  
*Gainesville, Ga.*



*First row HARRIS, HAWKINS, HAYNES. Second row HEBBARD, HEMPHILL, HENDERSON. Third row HENDON, HOLDEN, HOLDT. Fourth row HOLTZCLAW, HOUSLEY, HOWARD, HULME.*

## FRESHMEN





## FRESHMEN

*First row: JACKSON, JOHNS, JOHNSON. Second row: JONES, KARDELL, LASTINGER. Third row: LAVENDER, LIDDELL, McAFEE. Fourth row: McARTHUR, McCLUNG, McKELVEY, MCKENZIE.*

FREDERICK LLOYD KARDELL  
*Washington, D. C.*

LEN LASTINGER  
*Sparks, Ga.*

KATIE DEUFL LAVENDER  
*Athens, Ga.*

WEDFORD LIDDELL  
*Tifton, Ga.*

LOUISE McAFEE  
*Cleveland, Ga.*

RUBY LEE JACKSON  
*Cleveland, Ga.*

WILLIAM JOHNS  
*Toccoa, Ga.*

ELINOR JOHNSON  
*Jefferson, Ga.*

JOHN A. JONES  
*Dahlonega, Ga.*

WILLIAM McARTHUR  
*Moultrie, Ga.*

KENNETH McCLUNG  
*Atlanta, Ga.*

PAUL LEE McKELVEY  
*Taylorsville, Ga.*

MEREDITH MCKENZIE  
*Cordele, Ga.*

DIWLY McNAIR  
*Bluffton, Ga.*

JAMES FRANK NELSON  
*Mearsville, Ga.*

BILLY MADDOX  
*Griffin, Ga.*

FLETCHER NISBITT  
*Cordele, Ga.*

JOHN MANLEY  
*Boston, Ga.*

WILLIAM NORRIS  
*Newton, Ga.*

TOM MAUNLY  
*Cleveland, Ga.*

GROVER C. OLIVER  
*Clarkeville, Ga.*

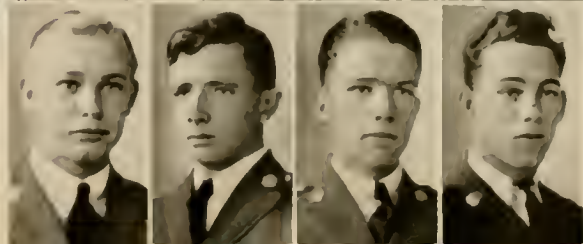
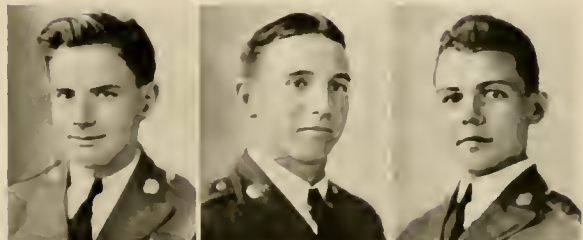
NILLE MAYES  
*Jasper, Ga.*

TOY MOON  
*Marietta, Ga.*

LADELLE MORGAN  
*Union Point, Ga.*

JACK MULLINS  
*Durand, Ga.*

EUGENE MURPHY  
*LaGrange, Ga.*

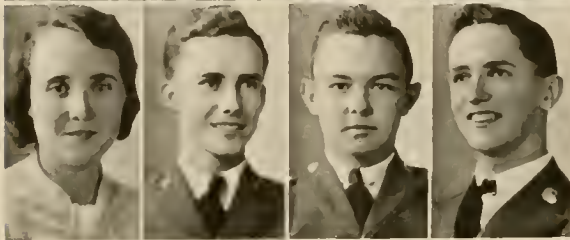


*First row: McNair, Maddox, Manley. Second row: Maunly, Mayes, Moon. Third row: Morgan, Mullins, Murphy. Fourth row: Nisbitt, Norris, Oliver.*

FRESHMEN

## FRESHMEN

*First row:* PARKER, PEARSON, PELFREY. *Second row:* W. PHILLIPS, R. PHILLIPS, PITTARD. *Third row:* PITTS, POPI, RIGDON. *Fourth row:* RITCHIE, ROGERS, RUSHIN, RUSSELL.



RUBY LOU PHILLIPS  
*Chamblee, Ga.*



ANN OLIVIA PITTARD  
*Duluth, Ga.*



CHARLIE PITTS  
*Griffin, Ga.*



EDNA POPI  
*Jacksonville, Fla.*



FRANK RIGDON  
*Tifton, Ga.*



OPAL RITCHIE  
*Cad, Ga.*



ROY ROGERS  
*Newton, Ga.*



CLYDE RUSHIN  
*Jonesboro, Ga.*



JACK RUSSELL  
*Cleveland, Ga.*

JAMES PARKER  
*Lumpkin, Ga.*



LUCY MAE PEARSON  
*Boston, Ga.*



JOHN PELFREY  
*North Roswell, Ga.*



WINFORD PHILLIPS  
*Dahlonega, Ga.*



# THE FRESHMEN

JANI SAPPINGTON  
*McDonough, Ga.*

ALLEN THOMASON  
*Nelson, Ga.*

EDWARD SKULTON  
*Hartwell, Ga.*

W. GLINN THORNTON  
*Point Peter, Ga.*

MARION SKULTON  
*Hartwell, Ga.*

GEORGE TIDWELL  
*Clarkston, Ga.*

MILLIE FRAN SMITH  
*Cumming, Ga.*

FRANCIS TURNER  
*Nicholson, Ga.*

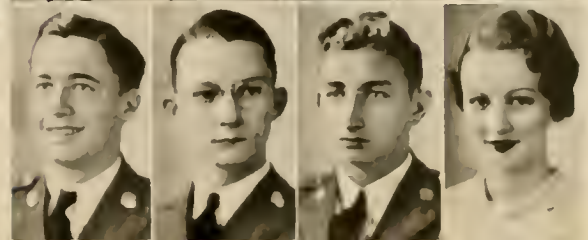
ERNEST STEPHENSON  
*Atlanta, Ga.*

AMBROSE POPE STEVENS  
*Carlton, Ga.*

WILLIAM STREYER  
*Lumpkin, Ga.*

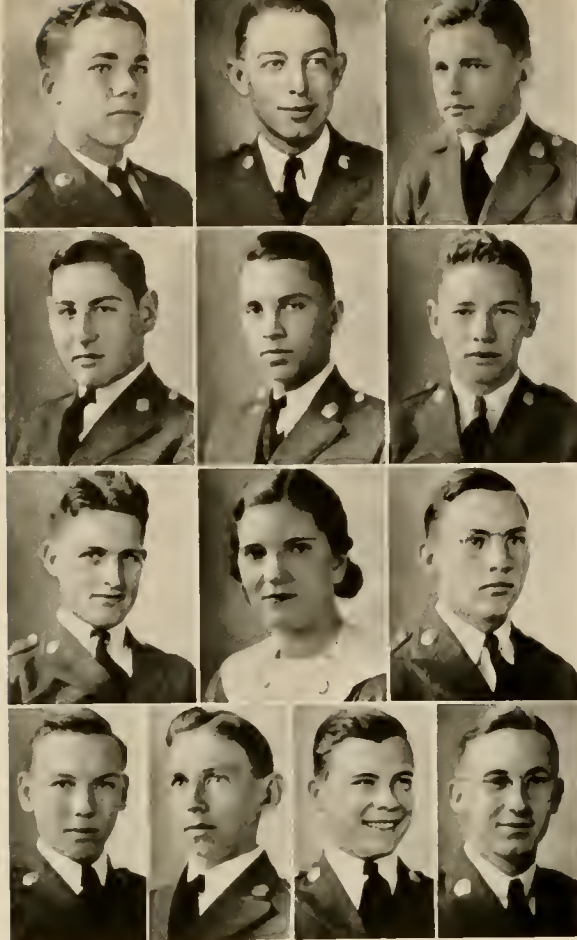
DAN TATE  
*Nelson, Ga.*

I. O. TEASLEY  
*Alpharetta, Ga.*



First row - SAPPINGTON, E. SKULTON, M. SKULTON  
Second row - SMITH, STEPHENSON, STEVENS Third  
row - STREYER, TATE, TEASLEY Fourth row  
THOMASON, THORNTON, TIDWELL, TURNER

## FRESHMEN



## FRESHMEN

*First row: TURNER, UNDERWOOD, WALKER. Second row: WALL, WALTON, WANSLEY. Third row: WEEKS, WHELCHER, WHITMIRE. Fourth row: WILLIAMS, WIMBERLY, WRIGHT, WYNN.*

ABEL WALTON  
*Ellijay, Ga.*

LAMAR WANSLEY  
*Carnesville, Ga.*

LEO DEAN WEEKS  
*Ludville, Ga.*

BLANCHE WHELCHER  
*Dablonaga, Ga.*

ERSKINE WHITMIRE  
*Dablonaga, Ga.*

JOEL TURNER  
*Moultrie, Ga.*

JAMES F. UNDERWOOD  
*Mayesville, Ga.*

THURSTON WALKER  
*Cornelia, Ga.*

CLYDE WALL  
*Dawson, Ga.*

HENRY WILLIAMS  
*Warm Springs, Ga.*

BAYNE WIMBERLY  
*Lumpkin, Ga.*

THOMAS W. WRIGHT  
*Alpharetta, Ga.*

ROBERT WYNN  
*Jonesboro, Ga.*

PICTURE NOT SHOWN

SIRMON AVIRA . . . .	<i>Lexington, Ga.</i>	RALPH KNIGHT . . . .	<i>Adel, Ga.</i>
OSSMONT BARKUTOO . . . .	<i>Tifton, Ga.</i>	GRACE LANGFORD . . . .	<i>Maysville, Ga.</i>
EULINI BARRITT . . . .	<i>Cumming, Ga.</i>	CAROLYN LANGFORD . . . .	<i>Tifton, Ga.</i>
RALPH BILL . . . .	<i>Athens, Ga.</i>	MARY N. LANGFORD . . . .	<i>Maysville, Ga.</i>
IRENE M. BENNETT . . . .	<i>Cumming, Ga.</i>	WALDO W. LINDSEY . . . .	<i>Arundton, Ga.</i>
JESSIE BURGESS . . . .	<i>Dablonega, Ga.</i>	HAROLD LOYD . . . .	<i>Athens, Ga.</i>
JOE E. BROWN . . . .	<i>Trion, Ga.</i>	DOROTHY LUNDY . . . .	<i>Macon, Ga.</i>
FRED BUTLER . . . .	<i>Dablonega, Ga.</i>	DOROTHY McCURDY . . . .	<i>Comer, Ga.</i>
SEWELL CHIEK . . . .	<i>Gainesville, Ga.</i>	JESSIE K. McDONALD . . . .	<i>Dablonega, Ga.</i>
JAMES CHILDS . . . .	<i>Hartwell, Ga.</i>	WILLIAM MCKENZIE . . . .	<i>Marshallville, Ga.</i>
GLENN COUCH . . . .	<i>Dougherty, Ga.</i>	WALTER MARTIN . . . .	<i>Shelburn, Ga.</i>
ATINI COUCH . . . .	<i>Dougherty, Ga.</i>	BASCOM A. MARTIN . . . .	<i>Kinston, Ga.</i>
WILLIAM DUPRIEST . . . .	<i>Moultrie, Ga.</i>	JOSEPH D. MAYS . . . .	<i>Lawrenceville, Ga.</i>
ELZIA ELLER . . . .	<i>Alto, Ga.</i>	ANN MORRIS . . . .	<i>Chamblee, Ga.</i>
RALPH FREEMAN . . . .	<i>Hoschton, Ga.</i>	VIVIAN F. MORRIS . . . .	<i>Cleveland, Ga.</i>
MORTON FULCHER . . . .	<i>Waynesboro, Ga.</i>	SYLVESTER MYERS . . . .	<i>Clermont, Ga.</i>
RUBY GARRETT . . . .	<i>Ellijay, Ga.</i>	BILIE OWENS . . . .	<i>Alamo, Ga.</i>
VIRTA LEE GARRETT . . . .	<i>Ellijay, Ga.</i>	JESSIE DEAN PALMER . . . .	<i>Chestatee, Ga.</i>
ALBERT BENJAMIN GAY . . . .	<i>Madison, Ga.</i>	TOMMIE PIERCE . . . .	<i>Murrayville, Ga.</i>
JAMES F. GIBERT . . . .	<i>Blakely, Ga.</i>	BONNELLE PIRKLE . . . .	<i>Dawsonville, Ga.</i>
JOSEPH P. GLOVER . . . .	<i>Cleveland, Ga.</i>	A. L. PRINCE . . . .	<i>Morganton, Ga.</i>
HENRY H. GRANTHAM . . . .	<i>Pinetieu, Ga.</i>	VILLA PRUITT . . . .	<i>Suabes, Ga.</i>
W. A. GRAY . . . .	<i>Suainsboro, Ga.</i>	LAMONTE PUCKETT . . . .	<i>Cumming, Ga.</i>
EDITH HENSON . . . .	<i>Ellijay, Ga.</i>	RUBY ROBINSON . . . .	<i>Covington, Ky.</i>
ETHEL HENSON . . . .	<i>Ellijay, Ga.</i>	AARON ROOBIN . . . .	<i>Cordele, Ga.</i>
ROBERT DANIEL HIGGINS . . . .	<i>Dalton, Ga.</i>	WILLIAM SAYE . . . .	<i>Rutledge, Ga.</i>
ESTELLE HOLMES . . . .	<i>Ranger, Ga.</i>	RUTH SOUTHUR . . . .	<i>Dalton, Ga.</i>
MILTON HUDSON . . . .	<i>Eatonton, Ga.</i>	JOHN STRICKLAND . . . .	<i>Jefferson, Ga.</i>
THEO HUGHES . . . .	<i>Dougherty, Ga.</i>	GEORGE F. TAYLOR . . . .	<i>Moultrie, Ga.</i>
RUBY JARRARD . . . .	<i>Dablonega, Ga.</i>	ROBERTS TLEDDER . . . .	<i>Atlanta, Ga.</i>
DEDRICK PIERCE JOHNSTON . . . .	<i>Tate, Ga.</i>	DAVID TOMPRINS . . . .	<i>Alexandria, Va.</i>
JO JONES . . . .	<i>Dablonega, Ga.</i>	SAM TURNER . . . .	<i>Toccoa, Ga.</i>
DORIS JORDAN . . . .	<i>Royston, Ga.</i>	HOWARD WEEKS . . . .	<i>Pierceville, Ga.</i>
FANNIE MAE KAY . . . .	<i>Suwanee, Ga.</i>	GEORGE WHITEN . . . .	<i>Martin, Ga.</i>
BONNIE MAE KELLAR . . . .	<i>Tate, Ga.</i>	MRS. BLONNIE WIMPY . . . .	<i>Dablonega, Ga.</i>
PETER KITTLIS . . . .	<i>Waynesboro, Ga.</i>	JOHN W. WILLIAMS . . . .	<i>Clermont, Ga.</i>
		LUCILLE WITHROW . . . .	<i>Ellijay, Ga.</i>

## HONORS LIST

### SOPHOMORE

*Fall*

MRS. HAZEL MARTIN  
 ERNEST PHILLIPS  
 FRED BRINSON  
 IDA NELL MCKINNON  
 JOHN R. COOK  
 GEORGE GALLOWAY  
 DAVIDSON HILL  
 A. J. SMITH  
 J. P. WADE  
 INEZ ROWLAND  
 SARA YOUNG  
 BARNEY CLAYTON  
 EUGENE GRUBBS  
 EMMA GRACE HOLCOMBE  
 CHARLES HUDSON  
 OLIN MANN  
 INEZ MARTIN  
 WILLIAM MAXWELL  
 FRED MOSS  
 HERBERT ROBINSON  
 WILLIAM TANNER  
 WADE WILLIAMSON  
 BESSIE JORDAN (Special)

*Winter*

ERNEST PHILLIPS  
 IDA NELL MCKINNON  
 EUGENE GRUBBS  
 FRED HULL  
 HERBERT ROBINSON  
 REID CHILDERS  
 BARNEY CLAYTON  
 JOSEPH FOSTER  
 ROBERT HOLBROOK  
 W. E. KENNEDY  
 WILLIAM MAXWELL  
 WADE WILLIAMSON  
 FRED MOSS  
 SARA YOUNG  
 GEORGE P. BABB  
 W. F. BARTEE  
 W. H. BATMAN  
 STANLEY DAVES  
 GEORGE GALLOWAY  
 WILBERT MLEKS  
 JAMES M. NEEL  
 DONALD ROGERS  
 A. J. SMITH  
 WILLIAM TANNER  
 JOE WODDAIL

### FRESHMAN

*Fall*

CHARLES CHAMPION  
 C. C. DAVIS  
 RUBY JARRARD  
 JANE SAPPINGTON  
 JOE E. BROWN  
 HONORE DALTON  
 ERNST HOLDT  
 WEDFORD LIDDELL  
 HORACE FUNDERBURK  
 JOHN MANLEY  
 JOEL TURNER  
 VIRGINIA HEMPHILL  
 LADELLE MORGAN  
 FRANCES TURNER  
 FRED BOLDING  
 GLENN COUCH  
 ROY HENDON  
 PETER KITTLES  
 EDNA POPE  
 FRED GOWDER

*Winter*

CHARLES CHAMPION  
 HORACE FUNDERBURK  
 HONORE DALTON  
 VIRGINIA HEMPHILL  
 ERNST HOLDT  
 PETER KITTLES  
 KENNETH MCCLUNG  
 FRED BOLDING  
 R. J. BRAY  
 VERTA LEE GARRETT  
 WILMA F. GARRETT  
 RUBY JARRARD  
 WEDFORD LIDDELL  
 JOHN MANLEY  
 JOEL TURNER  
 ROY HENDON  
 WOODFIN HULME  
 FANNIE MAE KAY  
 LADELLE MORGAN  
 JESSIE KATE PALMER  
 JAMES PARKER  
 FRANCES TURNER  
 ROBERT WYNN



M I L I T A R Y





## COLORS

CADET PRIVATE DYER  
CADET COLOR SERGIANT FIELD  
CADET PRIVATE DANCE  
(Acting Color Sergeant)  
CADET PRIVATE HOLTZCLAW



PROFESSORS OF MILITARY SCIENCE AND TACTICS

CAPTAIN KIRBY GREEN

*Infantry (D. O. L.)*

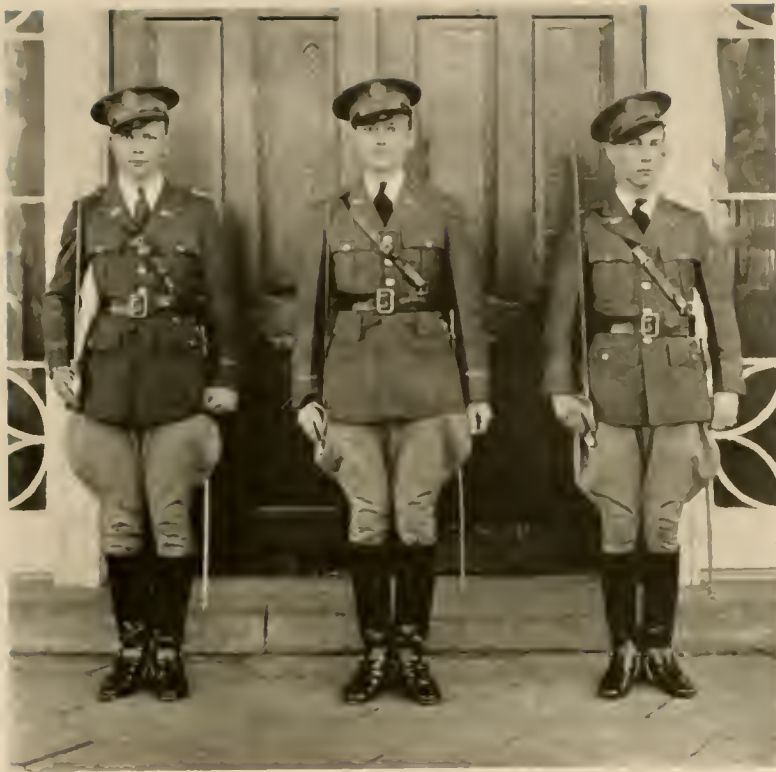
CAPTAIN CHARLES CARLTON

*Infantry (D. O. L.)*

SERGEANT RICHARD S. McCONNELL

*Infantry (D. E. M. L.)*





BATTALION STAFF

GEORGE GALLOWAY

*Cadet Captain*

ERNEST PHILLIPS

*Cadet First Lieutenant*

H. C. MITCHAM

*Cadet Second Lieutenant*



COMPANY "A"

FRED D. MOSS . . . . . *Cadet Captain*

JOHN R. COOK . . . . . *Cadet First Lieutenant*

W. HARRY TANNER . . . . . *Cadet Second Lieutenant*

HOUSTON KEMPLER . . . . . *Cadet First Sergeant*

G. BANNISTER  
C. BRYAN  
W. BURT  
L. CLARK  
G. COUCH  
H. DALTON  
C. DAVIS  
R. DAVIS  
M. DEFOOR  
B. A. GAY  
T. GENTRY  
F. GOWDER  
G. GRUBBS  
T. GUTHRIE  
J. HAYNIS

W. HEBBARD  
P. HENDERSON  
W. JOHNS  
J. A. JONES  
W. E. KENNEDY  
P. KITTLES  
O. MANN  
J. MANLEY  
T. MAUNLEY  
J. MAYS  
W. McARTHUR  
L. McKELVY  
M. McKENZIE  
D. McNAIR  
W. MORGAN

J. MULLINS  
E. MURPHY  
W. NORRIS  
F. NISBITT  
C. PAULK  
R. PELLERY  
J. W. PHILLIPS  
A. L. PRINCE  
L. PUCKETT  
F. RIGDON  
R. ROGERS  
C. RUSHIN  
J. RUSSELL  
H. SWELL  
A. J. SMITH

I. O. TEASEY  
A. THOMASON  
G. TIDWELL  
J. TURNER  
S. TURNER  
J. F. UNDERWOOD  
P. VAUGHN  
J. P. WADE  
A. WALTON  
H. D. WEEKS  
H. L. WEEKS  
H. WILLIAMS  
W. WILLIS  
R. WYNN





COMPANY "B"

THOMAS F. NICHOLSON . . . . . *Cadet Captain*  
 FRED RAGSDALE . . . . . *Cadet First Lieutenant*  
 NEIL STEWART . . . . . *Cadet Second Lieutenant*  
 DAVID H. DAVIES . . . . . *Cadet First Sergeant*

G. BATHMAN	B. CLAYTON	E. HOLDT	H. ROBINSON
W. BATHMAN	J. CORLTY	C. HOLTZCLAW	J. D. ROGERS
N. BIALI	S. DANCE	F. HULL	E. SKILTON
F. BOLDING	S. DAVIS	W. HULMI	M. SKILTON
G. BURCH	B. DYER	F. KARDELL	E. STEPHINSON
K. BURRELL	J. H. FOSTER	W. H. KIMZLY	A. P. STUVINS
C. BUTLER	L. FOWLER	J. LIDDELL	W. STRIYER
J. BYRD	H. FUNDERBURK	W. MADDOX	D. TATE
J. CALLAWAY	H. GIBSON	C. MARTIN	J. WODDAIL
L. D. CARLTON	H. HARDMAN	T. MOON	T. WALKER
H. CARNEY	W. HARRIS	R. MUNDY	Z. WALL
G. CHAMBERS	R. HENDON	F. NELSON	L. WANSLEY
H. CHAMPION	C. HOBSON	G. OLIVER	G. WHITEN
R. CHILDERS	J. HOLDIN	R. PURCELL	B. WIMBERLY
	T. WRIGHT		

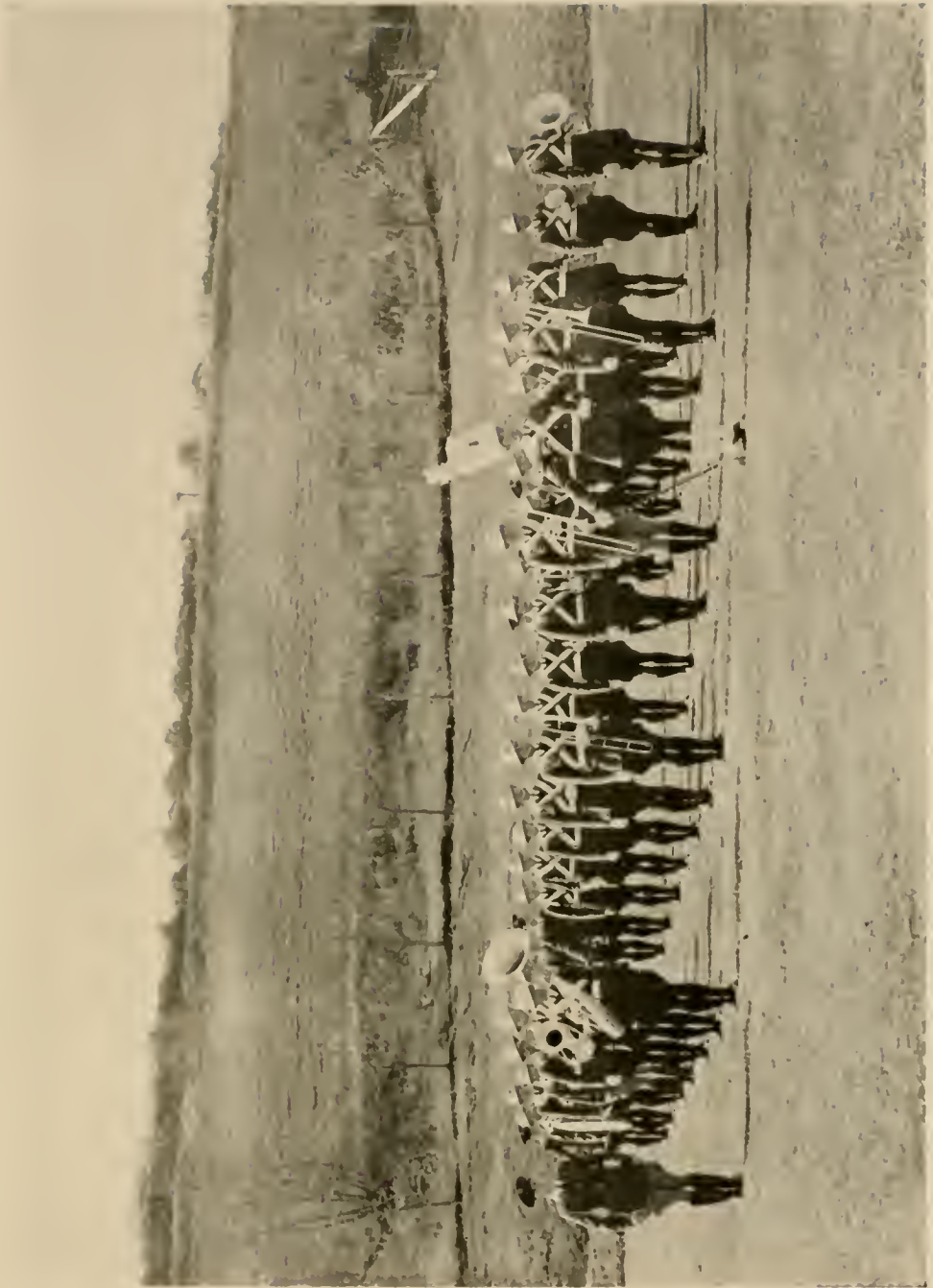




THE BAND

WILBERT MECKS . . . . . *Cadet Captain*  
 W. H. WILLIAMSON, JR. . . . . *Cadet First Lieutenant*  
 C. H. HARDY . . . . . *Cadet Second Lieutenant*  
 L. L. FLOYD . . . . . *Cadet First Sergeant*

J. ADAMS	F. COLLINS	R. KNIGHT	W. OWENS
G. BABB	C. C. DAVIS	J. LANGDALE	J. PARKER
W. BARTEE	W. S. EVANS	L. LASTINGER	C. PITTS
T. N. BOGGS	W. Z. FAUST	B. MARTIN	J. STRICKLAND
M. BOOTH	M. FEUCHER	W. MAXWELL	G. THORNTON
W. BOWERS	J. HARDY	K. MCCLUNG	C. WALL
R. BRAY	C. H. HUDSON	M. MULKEY	W. WHITMIRE
J. S. BROWN	C. C. JACKSON	M. NEEL	





*The Battalion*





ORGANIZATIONS





CYCLOPS STAFF

- E. C. PHILLIPS . . . . . *Editor-in-Chief*
- T. F. NICHOLSON . . . . . *Business Manager*
- C. J. DISMUKES . . . . . *Faculty Advisor*
- IDA NELL MCKINNON . . . . . *Assistant Editor*
- F. T. RAGSDALE . . . . . *Asst. Business Manager*
- W. D. MORGAN . . . . . *Photograph Editor*
- F. D. MOSS . . . . . *Art Editor*
- C. L. BLALOCK . . . . . *Snapshot Editor*
- G. H. GALLOWAY . . . . . *Athletic Editor*
- SARA YOUNG . . . . . *Literary Editor*
- N. STEWART . . . . . *Advertising Manager*
- J. B. MANLY . . . . . *Associate Editor*
- J. W. LIDDELL . . . . . *Asso. Business Manager*



MCKINNON  
MORGAN  
MOSS  
BLALOCK

PHILLIPS

NICHOLSON

RAGSDALE  
STEWART  
YOUNG  
GALLOWAY

MANLY

DISMUKES

LIDDELL

OFFICERS' CLUB

CADET FIRST LIEUTENANT W. H. WILLIAMSON . . . . . *President*

CADET FIRST LIEUTENANT F. T. RAGSDALE . . . . . *Vice-President*

CADET CAPTAIN F. D. MOSS . . . . . *Secretary and Treasurer*

MEMBERS

CADET FIRST LIEUTENANT J. R. COOK

CADET CAPTAIN G. H. GALLOWAY

CADET SECOND LIEUTENANT C. H. HARDY

CADET CAPTAIN W. D. MEEKS

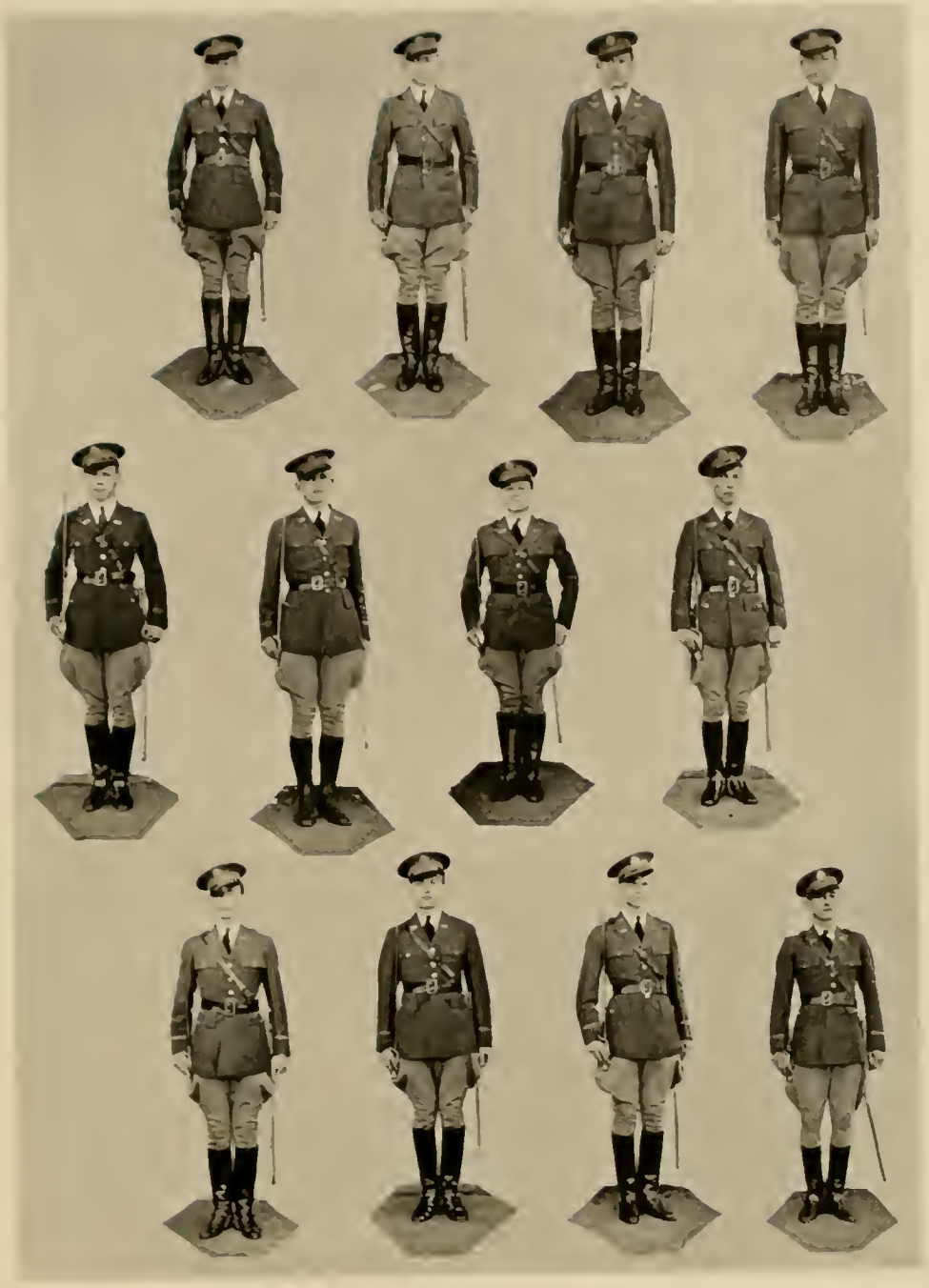
CADET SECOND LIEUTENANT H. C. MITCHAM

CADET CAPTAIN T. F. NICHOLSON

CADET FIRST LIEUTENANT E. C. PHILLIPS

CADET SECOND LIEUTENANT N. STEWART

CADET SECOND LIEUTENANT W. H. TANNER





GLEE CLUB

W. DESMOND BOOTH . . . . . *Director*  
 RICHARD S. McCONNELL . . . . . *Business Manager*  
 FRED MOSS . . . . . *Stage Manager*

*First Tenors*

BAYNE WIMBERLEY	WAYNE MORGAN	BILL NORRIS
ERNEST PHILLIPS	CLARK DAVIS	ABEL WALTON

*Second Tenors*

WARREN WILLIS	J. MONROI NEEL	WILLIAM STRFYER
JOSEPH S. BROWN	CHARLES FIELD	FRANK RIGDON
CRAWFORD PAULK	JOHN ROBERT COOK	

*First Basses*

MELL BOOTH	LEN LASTINGER	JACK ADAMS
TOM BOGGS	KINNETH McCLUNG	

*Second Basses*

WADI WILLIAMSON	TED KENNIDY	DONALD ROGERS
	FRED MOSS	

ORCHESTRA

W. DESMOND BOOTH . . . . . *Director*

RALPH KNIGHT . . . . . *Second Tenor Saxophone*

THOMAS F. NICHOLSON . . . . . *First Alto Saxophone*

JACK HARDY . . . . . *Third Alto Saxophone*

THOMAS BOGGS . . . . . *Trombone*

W. S. EVANS . . . . . *Second Trumpet*

LIN LASTINGER . . . . . *First Trumpet*

MILL BOOTH . . . . . *Bass*

WADE WILLIAMSON . . . . . *Drums*

KENNETH MCCLUNG . . . . . *Piano*



CORONA HEDERAE LITERARY SOCIETY

OFFICERS

- IDA NELL MCKINNON . . . . . *President*
- LADLELL MORGAN . . . . . *Vice-President*
- SARA YOUNG . . . . . *Secretary*
- FANNIE LEE KENIMER . . . . . *Treasurer*
- HAZEL MARTIN . . . . . *Chaplain*
- MISS JOSEPHINE STROTHER . . . . . *Faculty Advisor*

MEMBERS

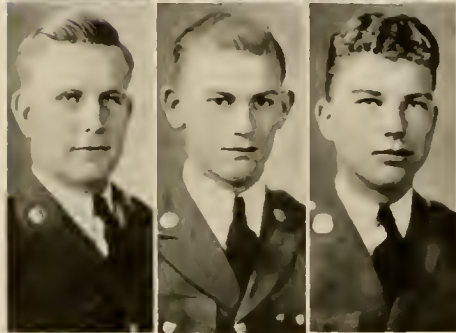
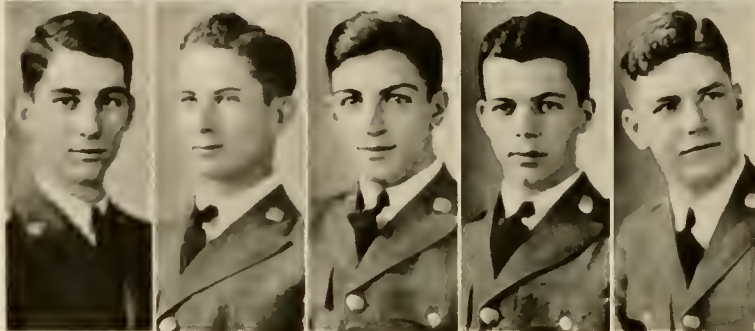
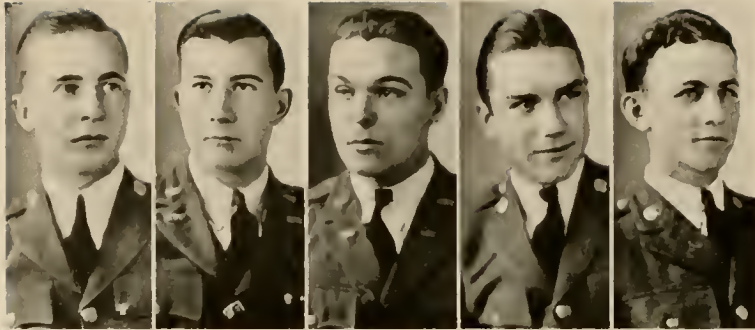
- |                     |                    |
|---------------------|--------------------|
| RUTH CRUMLEY        | FLORENCE MEADERS   |
| JOSEPHINE STROTHER  | IDA GRACE MITCHELL |
| MARY WILL FOWLER    | MARY MOORE         |
| AMANDA GARNER       | MARY MCKEE         |
| JEANETTE GILMORE    | LUCY PARSON        |
| JOHNNIE RUTH GLASS  | RUBY PHILLIPS      |
| ELFANOR HARRIS      | ANN OLIVIA PITIARD |
| FRANCES HAWKINS     | EDNA POPE          |
| VIRGINIA HEMPHILL   | INEZ ROWLAND       |
| EMMA GRACE HOLCOMBE | JANE SAPPINGTON    |
| GRACE HOUSLEY       | BERNICE SIMMONS    |
| ELINOR JOHNSON      | FRANCES TURNER     |
| INEZ MARTIN         | SYBIL WEST         |

MILDRED WILHITE





D E C

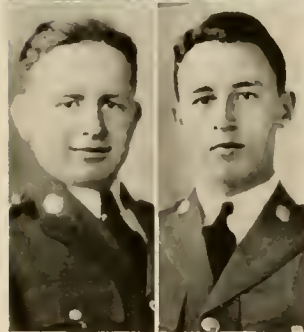


OFFICERS

A. J. SMITH  
*President*

F. D. MOSS  
*Vice-President*

J. R. COOK  
*Secretary-Treasurer*



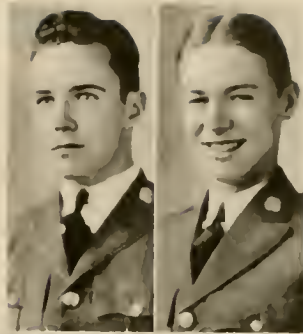
MEMBERS

J. P. BABB  
C. L. BLALOCK  
WILLIAM BOWERS  
KRESS BURRELL  
BILL BURT  
C. H. CHAMPION  
FRED COLLINS  
C. M. DAVIS

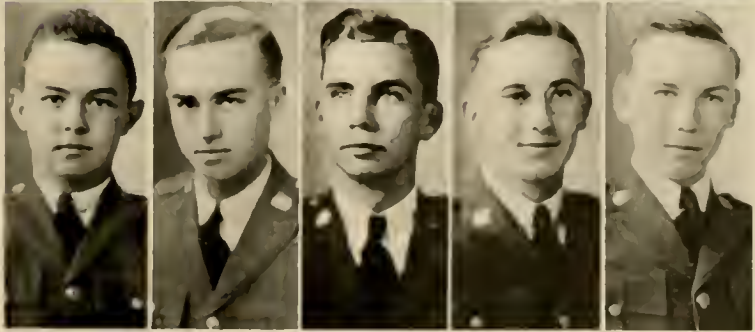
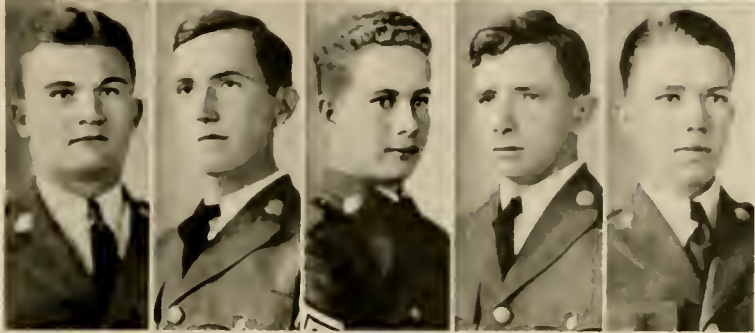
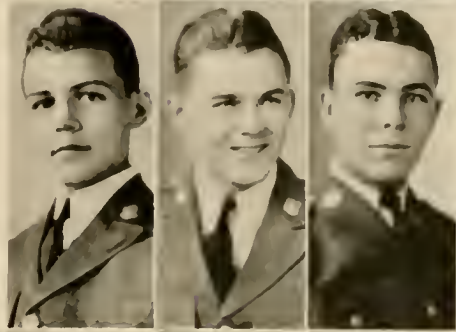
O R A

MEMBERS

- RICHARD DAVIS
- BURG DYER
- S. T. GENTRY
- R. B. HENDON
- CONLIN HOBSON
- F. L. KARDLI
- J. B. MANLEY
- W. D. MORGAN
- RUBEN MUNDY



- WILL McARTHUR
- MERIDITH MCKENZIE
- MONROE NIFE
- FLETCHER NESBITT
- BILL NORRIS
- CLYDE RUSHIN
- HENRY SEWELL
- J. P. WAD
- BOB WYNN
- HENRY WILLIAMS





Y. M. C. A.

OFFICERS

- WILLIAM BOWERS . . . . . *President*
- TED KENNEDY . . . . . *Vice-President*
- JACK SMITH . . . . . *Secretary and Treasurer*
- DR. ROGERS . . . . . *Faculty Advisor*

COMMITTEE CHAIRMEN

- ERNEST PHILLIPS . . . . . *Worship*
- RIUBEN MUNDY . . . . . *Missions*
- JOHN MANLY . . . . . *Recreation*
- WAYNE MORGAN . . . . . *Fellowship*

MEMBERS

- LANIER BLALOCK
- TURNER GENTRY
- BILLY HIBBARD
- MEREDITH MCKENZIE
- FRANK RIGDON
- HENRY SEWELL
- GEORGE TIDWELL
- ROBERT WYNN





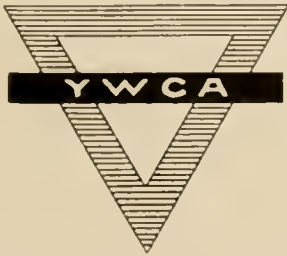
Y. W. C. A.

OFFICERS

- IDA NEIL McKINNON . . . . . *President*
- EMMA GRACE HOLCOMB . . . . . *Vice-President*
- RUTH CRUMLEY . . . . . *Secretary*
- SARA YOUNG . . . . . *Treasurer*

COMMITTEE CHAIRMEN

- MARY WILL FOWLER . . . . . *Program*
- AMANDA GARNER . . . . . *Social-Service-On*
- FANNIE LEE KINIMER . . . . . *Social*
- LADLELL MORGAN . . . . . *Devotional*
- EDNA POPE . . . . . *Weekly Meditation*





"D" CLUB

WEARERS OF THE "D"

D. H. DAVIS

CHARLES FIELD

G. H. GALLOWAY

C. H. HARDY

CONLIN HOBSON

F. G. HULL

WILBERT MEERS

H. C. MITCHAM

M. H. MURKIN

G. C. OLIVER

W. H. TANNER

DAN TATE

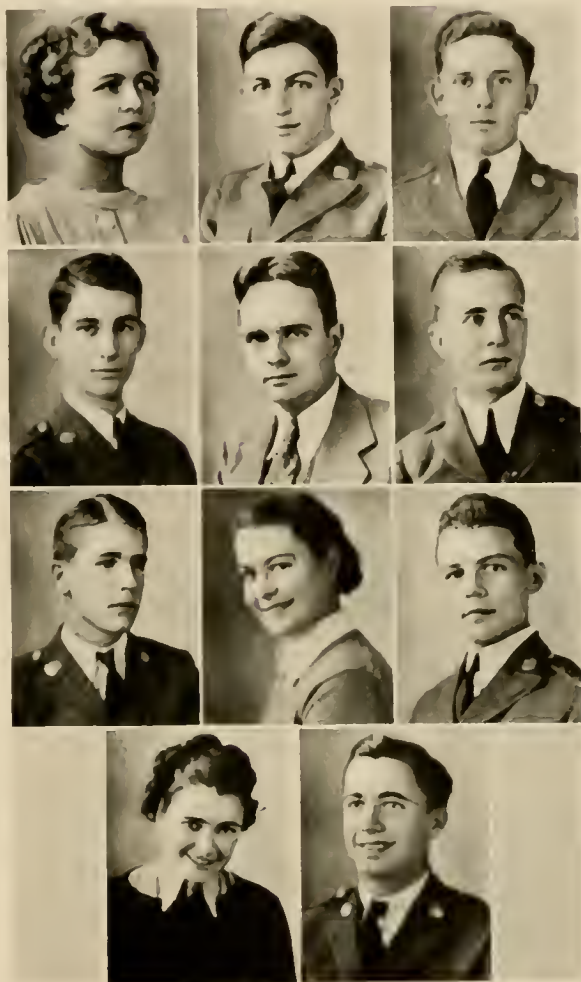
### DRAMATIC CLUB

#### OFFICERS

LA DELLE MORGAN . . . . .	<i>President</i>
WILLIAM BURE . . . . .	<i>Vice-President</i>
WILFORD LIDDELL . . . . .	<i>Business Manager</i>
WILLIAM BOWERS . . . . .	<i>Secretary</i>
C. J. DISMUKES . . . . .	<i>Faculty Advisor</i>
A. J. SMITH . . . . .	<i>Stage Manager</i>

#### MEMBERS

DORIS JORDAN	IDA NELL MCKINNON	NELLI MAYES
WILLIAM F. KENNEDY	JOHN MANLY	ALLEN THOMASON



\*No picture.

### REX CLUB

*Founded at North Georgia College, 1916*



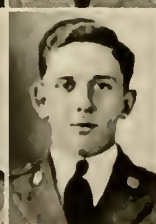
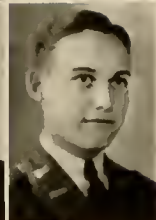
#### ALPHA CHAPTER OF THE REX CLUB

*Class of '35*

- T. F. NICHOLSON
- F. D. MOSS
- E. C. PHILLIPS
- W. H. TANNER
- C. L. BLALOCK
- R. DAVIS
- W. H. KIMZEY, JR.
- R. MUNDY
- H. SEWELL
- W. H. WILLIAMSON

*Class of '36*

- W. BOWERS
- W. BURT
- F. L. KARDILL
- J. W. LIDDELL
- J. MANLEY
- W. L. McARTHUR
- A. L. THOMASON





REX CLUB

COLORS:  
*Old Gold and Black*

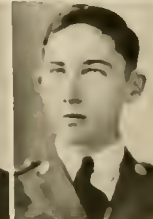
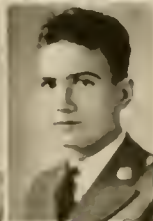
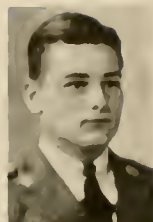
FLOWER:  
*Tuberose*

MOTTO:  
*The Wreath Is For Those Who Contend*

PIEDGES

- |                |             |
|----------------|-------------|
| G. G. BURCH    | W. JOHNS    |
| K. BURRILL     | H. KIMPER   |
| C. BUTLER      | K. McCLUNG* |
| C. H. CHAMPION | L. McKELVY  |
| J. R. COOK     | C. RUSHIN   |
| S. DANCI*      | E. SKILTON  |
| C. FIELD       | M. SKILTON  |
| T. GUTHRIE     | N. STEWART  |
| B. HIBBARD*    | J. TURNER   |
| R. HINDON      | S. TURNER*  |
| C. HOLTZCLAW*  | L. WILKS*   |
| W. HULMI*      | R. WYNN     |

\*Not in Picture



## SIGMA THETA



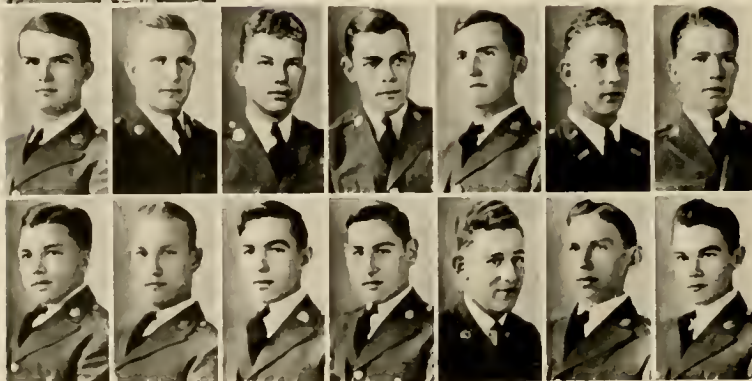
*Founded at North Georgia College, 1934*

### FRATRES IN COLLEGIO



PROF. BOOTH	BURG DYER
CRAWFORD PAULK	JACK HARDY
GENE GRUBBS	RED MCKENZIE
WAYNE MORGAN	PEE WELI MITCHAM*
JACK SMITH	BILL NORRIS
TED KENNEDY	FRANK RIGDON
MOODY MULKELY	BILL STREYER
TINKER BEALL	I. O. TIASLEY
TOM BOGGS	CLYDE WALL
FRED BOLDING	ZEKI WALL
TIP DAVIS	WAYNE WIMBERLEY
CLARK DAVIS	JOE WOODDAIL

\*Stray Greek.



### SIGMA THETA

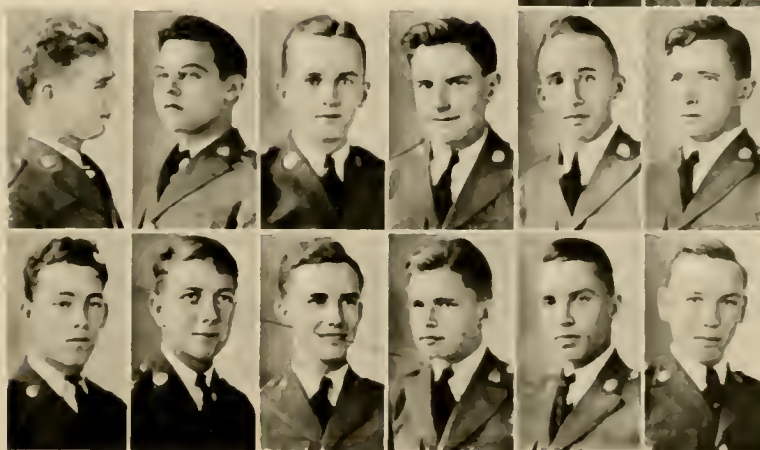
MOTTO: *Semper Summum Bonum*

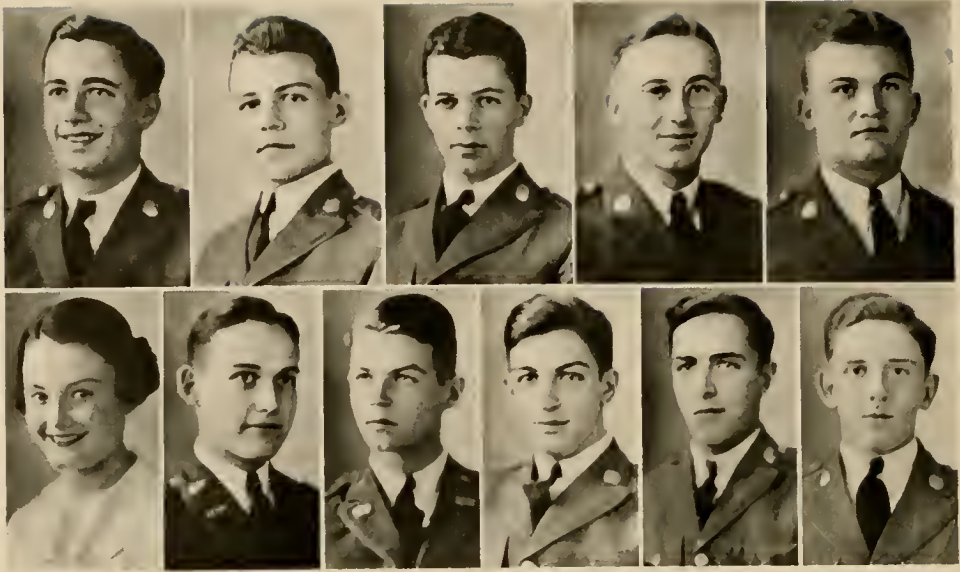
COLORS: *Blue and Gold*

FLOWER: *Orchid*

#### PLEDGES

- |                |                  |
|----------------|------------------|
| JACK ADAMS     | PEANUT HULL      |
| MELL BOOTH     | LEN LASHINGER    |
| CYDE BRYAN     | DEWEY McNAIR     |
| L. D. CARLTON* | JACK MULLINS     |
| REID CHILDERS  | FLETCHER NESBITT |
| HONORE DALTON  | GROVER OLIVER    |
| BILL DUPREISE* | JAMES PARKER     |
| BILL EVANS     | ROY ROGERS       |
| POPEYE FOSTER  | GEORGE TIDWELL*  |
| RED GENTRY*    | THURSTON WALKER  |
| BILL HARRIS    | ABEL WALTON      |
- HENRY WILLIAMS





CADET BUGLER

EDITORIAL STAFF

- ALLEN THOMASON . . . . . *Editor-in-Chief*  
 JOHN MANLEY . . . . . *Associate Editor*  
 HOWELL CHAMPION . . . . . *Associate Editor*  
 BOB WYNN and WILL McARTHUR . . . . . *Sports Editors*  
 FRID MOSS\* . . . . . *Art Editor*

REPORTORIAL STAFF

- JANE SAPPINGTON . . . . . NIL STEWART  
 ERNIST PHILLIPS . . . . . BILLY BURT  
 HOWARD WEEKS\*

BUSINESS STAFF

- HOUSTON KEMPER and WILDFORD LIDDILL . . . . . *Business Managers*

\*No picture.



FEATURE





---

MISS AMELIA PHILLIPS . . . Cuthbert, Ga.  
SPONSOR, CYCLOPS

---



---

MRS. BESSIE NICHOLSON . . . Valdosta, Ga.  
SPONSOR, STUDENT BODY

---





---

MISS NELLE MAYES . . . Marble Hill, Ga.  
MISS N. G. C.

---



---

MISS RUTH LEE STANCIL . . . . . Tate, Ga.  
SPONSOR, "A" COMPANY

---



MISS MARY LOU CONNELL . . . Valdosta, Ga.  
SPONSOR, "B" COMPANY



---

MISS JOEY ANDERSON . . . Nicholls, Ga.  
SPONSOR, BAND

---



---

MISS LADELLES MORGAN . . . Union Point, Ga.  
SPONSOR, BATTALION STAFF

---



---

MISS MARTHA SUE WILLIAMS . . . Tifton, Ga.  
SPONSOR, SIGMA THETA

---

# WHO'S WHO



7  
N. E. E.

Most Executive  
Most Representative  
Most Popular  
Most Ideal  
Most Courteous



11. Nell McManis  
Most Intelligent  
Most Executive



E. C. Philip  
Most Intelligent  
Most Strong



12. M. Alice  
Most Athletic

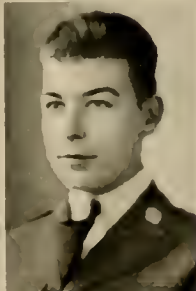


Jeff Stewart  
Most Athletic  
Biggest Gold Brick



14. L. M. ...  
Most Popular

15. J. A. ...  
Best  
Tough



Mary Moore  
Best Natured  
Most Courteous



17. ...  
Most Intelligent  
Most Popular  
Most Attractive



"Top" Fields  
Best Natured.



MEEKS  
Most Dignified.



Prof Bush  
Most Popular  
Faculty Member



Foster  
Most Original



Ruth Crumley Most Dignified



M. Skelton  
Sleepiest



"PEE WEE" - Ladies' Man.



Hull & Stewart  
Most Concerted.



Capt Carlton  
Most Religious



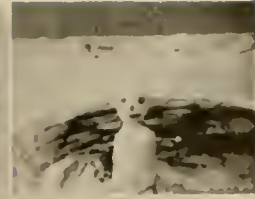
Hebbard  
Most Useful Rat



Callaway  
"Peppiest"



Rex Boys



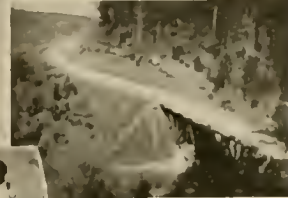
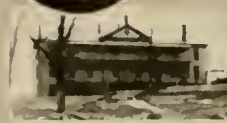
Some Boy's Frost Bitten  
Who is it?

It, Me



Rex House

Band House



Gainesville Bound

Mills Bros. and Stepin  
Fetchit



Mrs. Green

Pres. Rogers

Ever Present



Wonder What the Sergeant  
Is Saying?



SNAP SHOTS





A T H L E T I C S



## STATE BASKET-BALL CHAMPIONS



MRS. R. W. STEPHENS, *Sponsor*

WHEN the call for basket-ball went out just before Christmas, a large squad of inexperienced players answered. Coach Stephens had only three of his varsity men back, and one of these, Davidson Hill, a stellar guard, dropped out after Christmas. Keeping one veteran, Stewart, at forward, and shifting the other, Hardy, from guard to center, Coach started out to build a new combination from his green equipment.

Early prospects were decidedly poor. Two practice games were lost by disappointing scores. The season opened January 11 with the Cadets barely defeating West Georgia College 35-31. The next night the Cadets managed to outshoot the strong New Holland Athletic Club and from that time on the green material began showing promise. Two road trips marked by two defeats served to whip the combination into shape and the Cadets started showing a surging power which increased with each game until the final records showed seventeen victories out of twenty-one starts. Hiwassee College, Gordon Institute, New Holland Athletic Club, and Young Harris stopped the Cadets one time each. Victories were scored over West Georgia College, New Holland Athletic Club, Hiwassee College, LaGrange Y. M. C. A., Reinhardt College, Piedmont College, and Young Harris College. This was the first time in many years that North Georgia has made a clean sweep of the Piedmont College series.

To sponsor interest in junior college athletics in the state the junior colleges of the state participated in two regional tournaments, North Georgia participating in the northern division tournament held at Young Harris. In spite of the fact that the



*Front Row:* GALLOWAY, TATI, STEWART, HARDY, DEFOOR, WANSLEY, FIELDS.  
*Second row:* RUSSELL, TANNER, OWENS, BOGGS, MANN, COACH  
 STEPHENS, PURCELL, HARDMAN, OLIVER, DEFOOR, MEERS.

### BASKET-BALL SQUAD

Nuggets closed their season the night before the start of the tournament by defeating Piedmont in the hardest game of the season, Coach Stephens' boys crushed Bowden College in the first game 52-30, eased through the Georgia Military College game with an eight point lead, and terminated the finals with a brilliant 52-18 victory over Reinhardt College, thus winning the northern division championship.

While North Georgia was proving itself master of this section, Abraham Baldwin College of Tifton was winning the southern division tournament. On the evening of March 11 the two regional champions clashed in Athens in one of the greatest college basket-ball games ever witnessed in Georgia. North Georgia won an early lead, a scant one, which was retained until the end. By shooting 36 points and holding the South Georgians to 30 points, North Georgia emerged with the official state junior college championship.

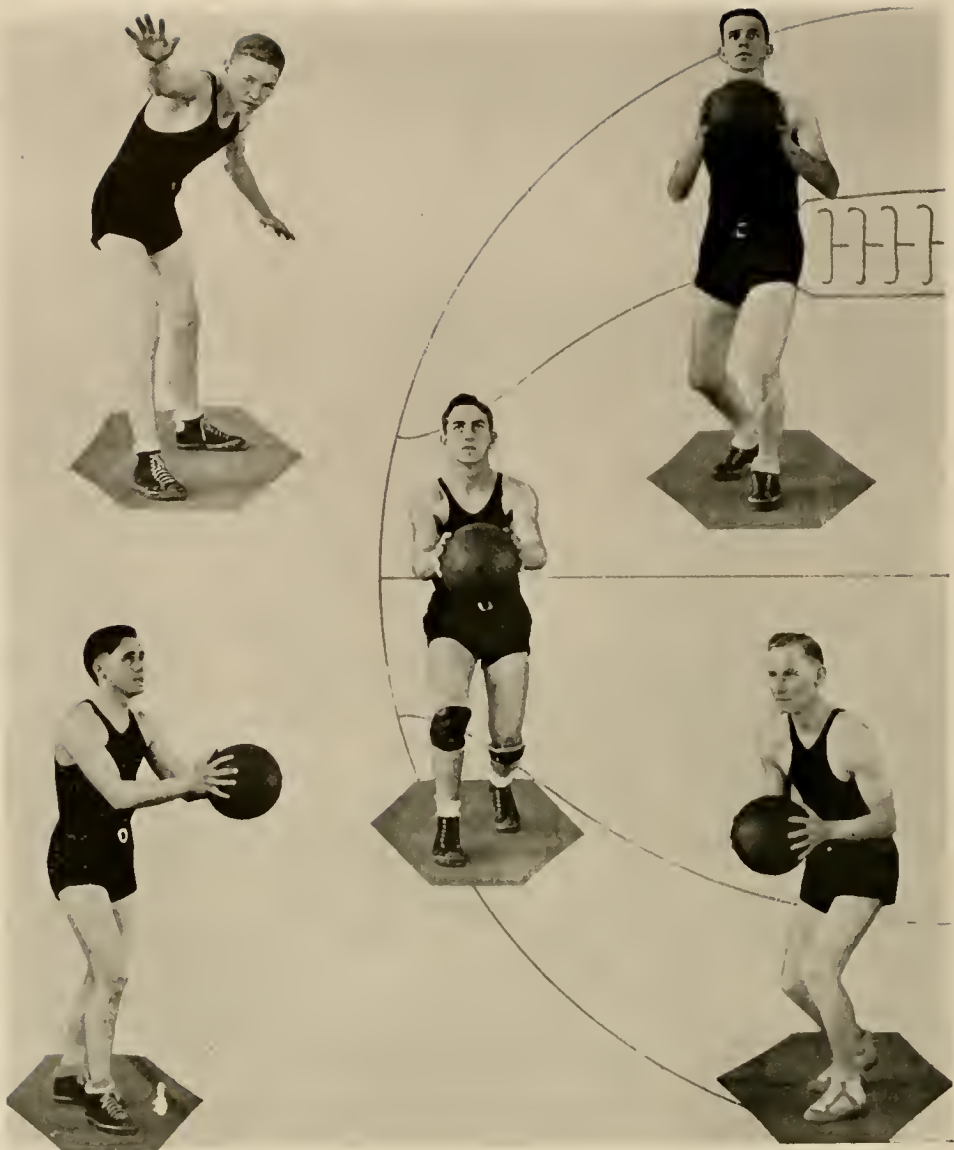
## INTRAMURAL ATHLETICS

**B**EGINNING with the 1934-35 term the North Georgia College abandoned inter-collegiate football competition in order to expand its intramural athletic program. The aim has been to get as many students as possible actively participating in physical recreation. The major interest in sports for men centered in the intramural basket-ball tournament with teams coached by returning members of last year's varsity team. Active participation for girls was provided for in the girls' gym class.

The student body elected six cheer leaders to guide its manifestations of pep. The result was evident in an increased attendance at basket-ball games and a more earnest rooting spirit which was to a large extent responsible for North Georgia's state championship.



*Cheer Leaders: HULL, SAPPINGTON, CALLAWAY, MULKEY, JOHNSON, PITTS.*



WANSLEY  
*Guard*

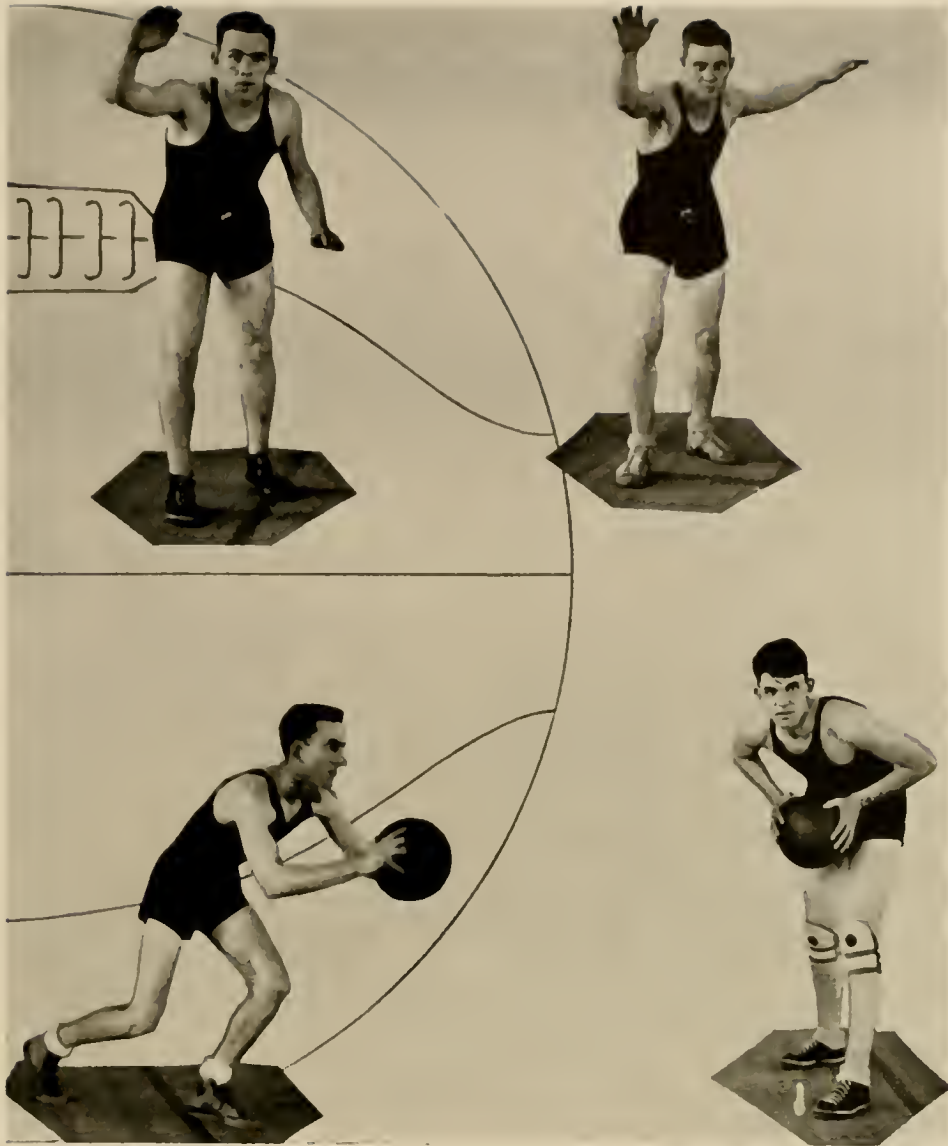
TATE  
*Forward*

STEWART  
*Captain and Forward*

HARDMAN  
*Guard*

DE FOOR  
*Forward*





OLIVER  
*Forward*

MARSHALL DE FOOR  
*Guard*

TANNER  
*Forward*

HARDY  
*Center*

THE SCHEDULE

<i>N. G. C.</i>	<i>Opponent</i>
35 West Georgia College . . . . .	31
36 New Holland Athletic Club . . . . .	33
41 Hiawassee College . . . . .	29
29 Hiawassee College . . . . .	31
16 Gordon Military College . . . . .	21
37 West Georgia College . . . . .	34
40 LaGrange Y. M. C. A. . . . .	29
19 New Holland Athletic Club . . . . .	23
38 Reinhardt College . . . . .	18
34 Young Harris College . . . . .	36
44 Piedmont College . . . . .	33
46 Hiawassee College . . . . .	33
45 Hiawassee College . . . . .	24
48 LaGrange Y. M. C. A. . . . .	43
52 Young Harris College . . . . .	34
35 Reinhardt College . . . . .	24
44 Piedmont College . . . . .	30

THE TOURNAMENT

52 Bowden College . . . . .	31
33 Georgia Military College . . . . .	25
52 Reinhardt College . . . . .	18

THE CHAMPIONSHIP

36 Abraham Baldwin College . . . . .	30
--------------------------------------	----

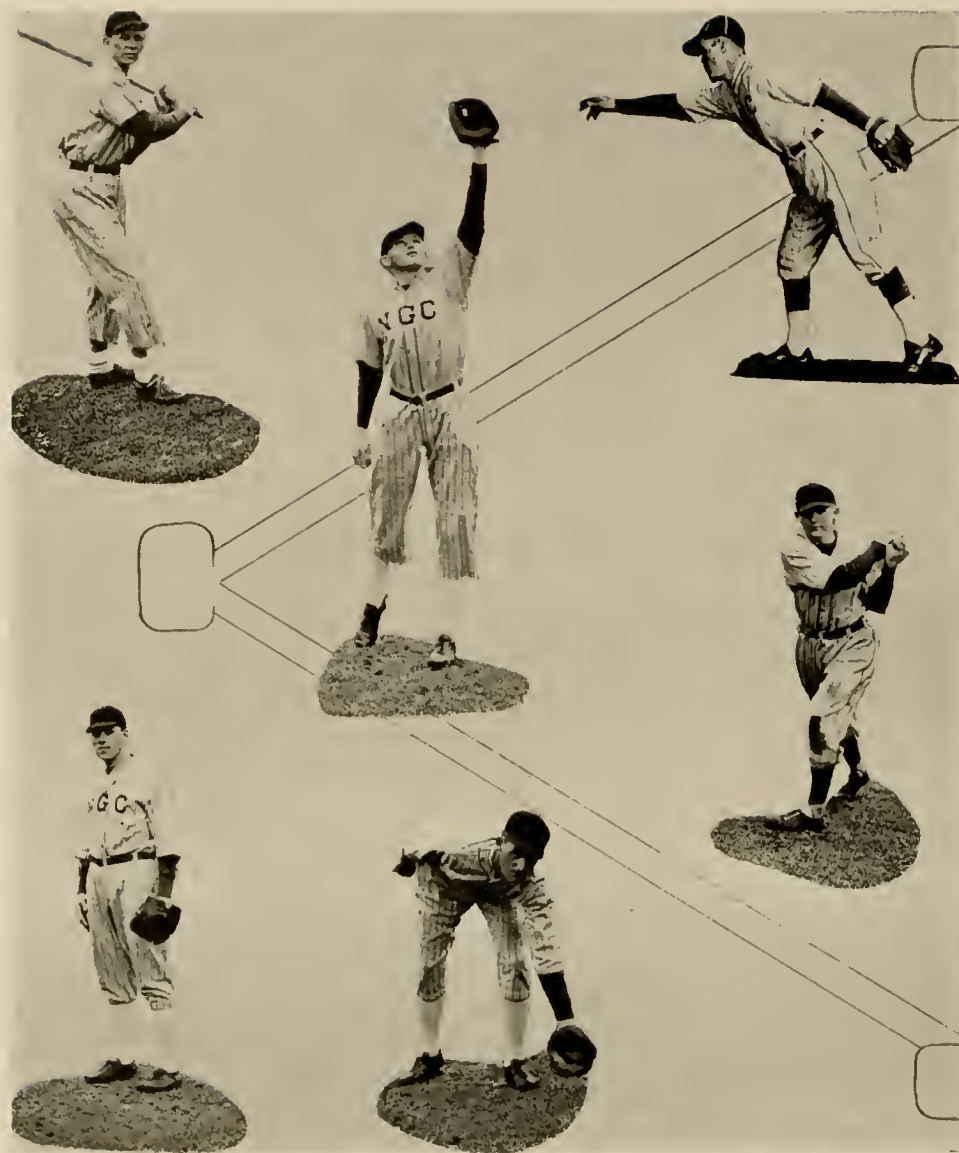


*Kneeling:* TATE, MUNDY, TANNER, WEEKS, RAGSDALE, MEEKS.  
*Standing:* TIDWELL, PRINCE, RUSSELL, HARDMAN, OLIVER, STEPHENSON, WYNN, FIELD.

### BASEBALL SQUAD

#### SCHEDULE OF NORTH GEORGIA COLLEGE 1935

<i>When</i>	<i>Who</i>	<i>Where</i>
APRIL 12-13 . . . . .	OGLETHORPE FRESHMEN . . . . .	DAHLONGA
APRIL 16 . . . . .	YOUNG HARRIS . . . . .	DAHLONGA
APRIL 25 . . . . .	OGLETHORPE FRESHMEN . . . . .	OGLETHORPE
APRIL 26-27 . . . . .	GORDON . . . . .	GORDON
MAY 1 . . . . .	YOUNG HARRIS . . . . .	YOUNG HARRIS
MAY 3-4 . . . . .	GORDON . . . . .	DAHLONGA
MAY 10-11 . . . . .	HIWASSEE . . . . .	MADISON
MAY 10-11 . . . . .	HIWASSEE . . . . .	DAHLONGA



HARDMAN  
O. F.

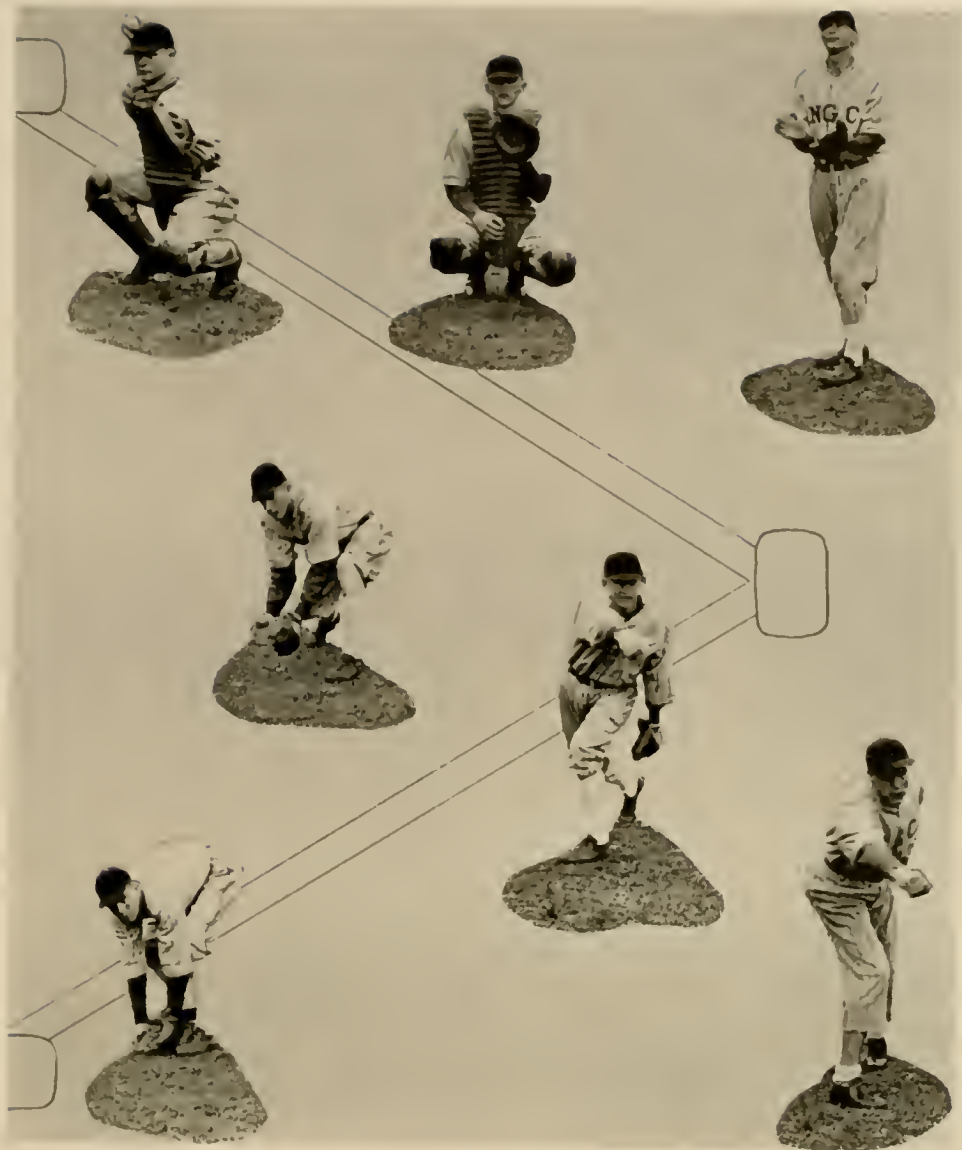
OLIVER  
I. F.

PRINCE  
I. B.

WEEKS  
O. F.

HOBSON  
Pitcher

RAGSDALE  
S. S.



MILKS  
C.

RUSSELL  
C.

STEVENSON  
O. F.

TANNER  
3 B.

WYNN  
*Pitcher*

MUNDY  
2 B.

TATE  
*Pitcher*



*Front row:* CAPTAIN GREEN, Coach; HOLTZCLAW, MAXWELL, MEEKS,  
WILLIAMSON, MOSS.

*Second row:* BLALOCK, DYER, ROGERS, HOBSON, TANNER, FIELD,  
NICHOLSON.

*Third row:* DANCE, MORGAN.

## RIFLE TEAM

The Hearst Team is composed of five men: Holtzclaw, Maxwell, Meeks, Field, and Morgan.



A D S

# North Georgia College

DAHLONEGA       ✓       GEORGIA



A member of the University System of Georgia, offering standard liberal arts junior college courses. Fully accredited and recognized by the University of Georgia and the State Department of Education.

Essentially military in organization, but co-educational.

Low costs, superior military and academic advantages, University System prestige.



For Catalogue Address

JONATHAN C. ROGERS, PRESIDENT

North Georgia College

DAHLONEGA       ✓       GEORGIA



# VERNON H. SMITH

STUDENTS' FRIEND

Nearest Campus



MOST COMPLETE LINE OF CIGARETTES IN TOWN



## SOUTHERN DAIRIES

ICE CREAM

SANDWICHES ✓ CANDY ✓ STATIONERY

SCHOOL SUPPLIES



SNOOKER

STANDARD OIL PRODUCTS

COMPLIMENTS OF

*Dahlonega Chevrolet Company*



PHONE 33



HENRY W. MOORE

DAHLONEGA, GA.

COMPLIMENTS OF

PRUITT-BARRETT HARDWARE COMPANY



GAINESVILLE

GEORGIA

SMITH HOUSE

MRS. H. B. SMITH, PROP.

*"A Home Away From Home"*

WE SPECIALIZE IN OUR DINING ROOM

DAHLONEGA

GEORGIA

JOHN H. MOORE

ROBERT M. MOORE

*COMPLIMENTS*

# John H. Moore & Son

•

SHOES AND SWEATERS    ✓    RAINCOATS

CLOTHING AND FURNISHINGS

•

CANDIES    ✓    SMOKES AND SCHOOL SUPPLIES

•

DAILY BAGGAGE AND EXPRESS

SERVICE TO GAINESVILLE

COMPLIMENTS

... OF ...

H . H E A D

MEALS THAT SATISFY

Breakfast   ✓   Lunch   ✓   Dinner

ALSO A LA CARTE AND FOUNTAIN SERVICE

YOUR PATRONAGE APPRECIATED

CINCILOLO'S

*"Where Friends Meet"*

31 MAIN STREET

ELLIOTT'S  
*PEACHTREE STUDIO*

PHOTOGRAPHER  
✓ TO THE ✓  
1935 CYCLOPS



PARAMOUNT THEATRE BUILDING  
ATLANTA ✓ GEORGIA

A B E E & W E S T  
DRY CLEANING AND DYEING

Cash and Carry

DAHLONEGA ✓ GEORGIA

IF YOU EAT, DRINK OR SMOKE  
GO TO JOE'S  
*Near the College Campus*

J O E P H I L L I P S

DAHLONEGA ✓ GEORGIA

# *THE COLLEGE INN*

JIMMIE HAYNES

CANDIES                    ✓                    SANDWICHES

DRINKS

ICE CREAM                    ✓                    TOBACCOS

FRUITS

SCHOOL SUPPLIES                    ✓                    STATIONERY

"If You Want to Find Someone, Go to the College Inn."

JACOB REED'S SONS

PHILADELPHIA



Manufacturers of High Grade Uniforms Since 1924

A u t o m o t i v e  
S e r v i c e

Acetylene Welding

Tires                    ✓                    Batteries                    ✓                    Accessories

PALMER & GURLEY

DAHLONEGA



GEORGIA

WESTMORELAND SODA FOUNT

A cozy spot for Dahlonge students to be treated with

FOREMOST ICE CREAM

DAHLONEGA

✓

✓

GEORGIA

COMPLIMENTS OF

ROSE'S 5-10-25c STORES

*"A Southern Concern"*

N. G. C. STUDENTS WELCOME

STORE NO. 77

GAINESVILLE

✓

✓

GEORGIA

W. A. WHITMIRE

General Merchandise

Dry Goods ✓ Shoes ✓ Notions ✓ Clothing ✓ Groceries

Feed Stuff and Hardware

PHONE 26

DAHLONEGA

✓

✓

GEORGIA

COMPLIMENTS OF

W. A. HOUSLEY

*"On the Square"*

HIGH CLASS SHOE REPAIRING

COMPLIMENTS OF  
THE BANK OF DAHLONEGA  
PROGRESSIVE     ✓     ACCOMMODATING  
*"A Safe Friendly Bank"*  
WE ARE ALWAYS FOR A GREATER N. G. C.

COMPLIMENTS OF  
JOHNNIE MOORE'S SERVICE STATION  
WHEN YOU WISH TO GO AND GET BACK  
... See Me ...  
CARS FOR HIRE  
DAHLONEGA     ✓     ✓     GEORGIA

Just to Remind You That There Is None Better  
... Than ...  
BUTTERCREAM BREAD  
DAVIS BAKERY  
GAINESVILLE     ✓     ✓     GEORGIA

COMPLIMENTS OF  
WOODY'S BARBER SHOP  
"ON THE SQUARE"  
●  
N. G. C. STUDENTS WELCOME

DAHLONEGA

CUMMING

ATLANTA

DAHLONEGA - ATLANTA BUS LINE, INC.

NICE CARS : CAREFUL DRIVERS

*Leave Atlanta*

8:00 A. M. ↗ 3:00 P. M.

*Leave Dahlonega*

8:00 A. M. ↗ 4:00 P. M.

FARE: \$2.00 ONE WAY ↗

\$3.00—ROUND TRIP

FRED JONES, Manager

COMPLIMENTS OF

LIPSCOMB DRUG COMPANY

A Complete Line of Drugs, Sodas, Stationery,  
Candy and Magazines

ALWAYS WELCOMING DAHLONEGA STUDENTS

DAHLONEGA ↗

↗ GEORGIA

COMPLIMENTS OF

THE  
DAHLONEGA NUGGET

DAHLONEGA ↗

↗ GEORGIA

FRIERSON - McEVER CO.

Style Leaders In

*Clothing*

FURNISHINGS AND SHOES

LADIES' READY-TO-WEAR

A GLAD HAND IS ALWAYS TO THE  
N. G. C. STUDENTS

GAINESVILLE ↗

↗ GEORGIA

THE 1935 CYCLOPS STAFF

↗ THANKS ↗

Each and Every Advertiser in This Book and  
Asks That All N. G. C. Boys Patronize Them.

E. C. PHILLIPS, *Editor*

T. F. NICHOLSON, *Bus. Mgr.*





*Complete*  
EQUIPMENT

A KNOWN FACTOR IN THE FORMULA  
FOR A SUCCESSFUL ANNUAL IS  
THE SERVICE OF

**FOOTE & DAVIES COMPANY**

WHERE EVERY DETAIL OF THE PROCESSES OF  
CREATING · PLANNING · LAYOUT AND DESIGN  
TYPESETTING · PRINTING · LITHOGRAPHY  
AND BINDING IS DONE IN ONE  
PLANT BY EXPERT CRAFTSMEN  
USING THE FINEST OF  
MATERIALS

